



ISO 9001
Certificate



ISO 14001
Certificate



ACRA

The New Pinnacle of Gearless

Reaching new heights

SIGMA
ELEVATOR&ESCALATOR

SIGMA ELEVATOR&ESCALATOR (SUZHOU)CO.,LTD

ADD:SHANGLING BUILDING,ZHONGSHAN ROAD,WUJIANG ZONE,SUZHOU CITY,CHINA.
TEL:0512 6393 3760 +86 17712476986 FAX:0512 6393 3670

WEB:www.sigmaelevatorescalator.com
MAIL:sigmaelevator@sigmaelevatorescalator.com

SIGMA
ELEVATOR&ESCALATOR



ISO 9001
Certificate



ISO 14001
Certificate



ACRA

The New Pinnacle of Gearless

Reaching new heights

SIGMA
ELEVATOR&ESCALATOR

SIGMA ELEVATOR&ESCALATOR (SUZHOU)CO.,LTD

ADD:SHANGLING BUILDING,ZHONGSHAN ROAD,WUJIANG ZONE,SUZHOU CITY,CHINA.
TEL:0512 6393 3760 +86 17712476986 FAX:0512 6393 3670

WEB:www.sigmaelevatorescalator.com
MAIL:sigmaelevator@sigmaelevatorescalator.com

SIGMA
ELEVATOR&ESCALATOR

COMPANY PROFILE

Sigma Elevator Shanghai Co, LTD specializes in researching into, developing, manufacturing, seiling various elevator parts. Located in Shanghai Podong Area. It is noticeable geographical advantages and transport facilities.

Sigma Shanghai owns the complete production equipment, the leading manufacture craft & technology with the advanced configuration, complete quality supervision system. Meanwhile, it owns the senior elevator parts research and development specialists and teams in China. Main products are Mitsubishi Door machine and landing door hanger, Selcon door machine and landing door hanger, cabin, shaft parts and so on. It adheres to quality first principle. It strictly accords with ISO9000 Quality System requirements in its operation. At the same time, it follows OTIS Q+ Quality System Standard. It ensures that every ex-factory product in fine in quality. It wins great satisfaction from vast clients.

Sigma Shanghai will, as always, continuously and wholeheartedly serve elevator manufacturers by high standard,superior quality and excellent services. Lets creat great splendors.



SIGMA

WORKSHOP EQUIPMENT

SIGMA Elevator puts out 16 advanced production lines including fully automatic flexible metal-working production line, medium thickness metal-working production line, production line control system, robot welding production line, automatic painted production line etc. It has a complete set of modern digital machining equipment, testing facilities in order to warrant perfect product quality.



PRODUCT SERIES

Small machine room passenger elevator

SIGMA small machine room passenger elevator strictly accords with German manufacture technology, advanced industrial technology. It optimizes space design with intellectual & compact mechanical parts. It effectively reduces top space, saves construction cost. It features as energy-saving, environment-protection, safe, stable, comfortable travel. It also has other advantages. It provides all kinds of modern buildings with reliable solution plans.



Machine room-less passenger elevator

SIGMA machine roomless passenger elevator perfectly shows energy-saving, consumption-reducing, environment-protection concept. We try hard to save building area, enhance design freedom. It gives a full play of green human-centered ideas. Compared with same load horizontal gear elevator, it can save more power and building area. Machine room-less passenger elevator breaks through a "must" of machine room. It provides limited space with innovative possibilities.



Observation elevator

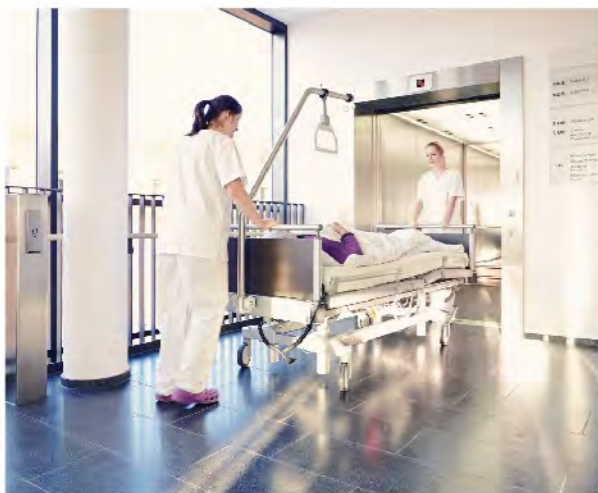
SIGMA observation elevator applies highly secure laminated glass with fine transparency. The passengers can appreciate beautiful scenes in busy city through transparent car wall. Lamination layer in laminated glass has radiation-proof functions. It buffers sound wave vibration. Therefore it has sound-isolating effects. Large area car wall glass design has smooth lines. It beautifies car outline. What is more, it adds more charm to the buildings.

PRODUCT SERIES



Bed elevator

SIGMA bed elevator series products fully reflect the "human oriented" design concept, and create a moving space full of warmth and comfortable for both patients and medical staffs to the utmost. With soft light, simple color tone, you can practically feel the tender concern and best wishes from company all the time.



Stretcher elevator

SIGMA stretcher elevator cares both your and our safety & health. Jointly fulfills social responsibilities with you. Rescue elevator is specially custom-made for residential building and public occasions. Reliable rescue special-purpose systematic design, scientific car space planning are more convenient to form obstacle-free channel and quickly arrives at destination floor during emergency rescue. It thus protects the users' safety.



Freight elevator

SIGMA freight elevator combines with top technologies such as elevator engineering technology etc., fierce drag system, highly strengthened mechanical structure design. It can contain a lot of goods. It can still be operated under various harsh environments. It features as effective, reliable, firm, durable, accurate leveling and so on. It is widely applicable for goods transport occasions such as factory, warehouse, shopping center etc.



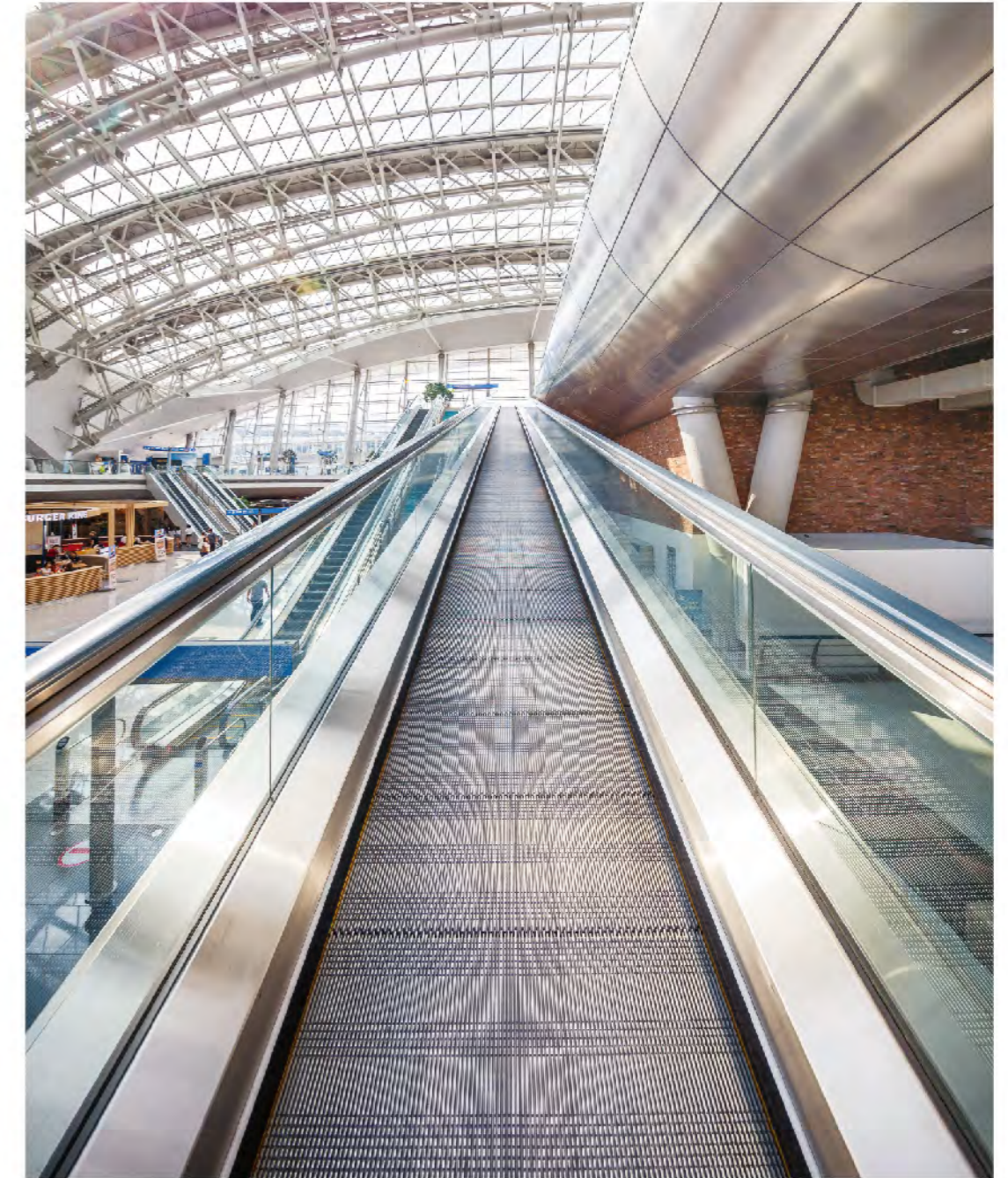
Automobile elevator

SIGMA automobile elevator introduces well-developed international car elevation technology. It develops and manufactures automobile elevator through absorption, transformation and improvement. Advanced technology removes shaking car problem due to noise, burdened traction system and uneven force to elevator car. It optimizes characteristics of the product series.

PRODUCT SERIES

Escalator

SIGMA escalator applies the advanced Swiss technology, design concept for manufacture. It grants you to appreciate the outstanding charm and deluxe manner of modern buildings by fine and exquisite structure, consummate elevator path, delicate belt, deluxe and attractive outline. It provides the passengers with a bright, comfortable, brand-new feeling.



Moving walk

SIGMA moving walk satisfies the transport requirement of large passenger flow in public traffic and transport areas such as large-size supermarket, airport, exhibition center, transport hub etc. It meets long-distance walk. People feel as easily as walking on firm earth while carrying luggage cart, baby's cart, the vehicle for the disabled in moving walk. It is greatly convenient for the people's outing and shopping.

PASSENGER
ELEVATOR
CAR DECORATION



SGM-001 ◀

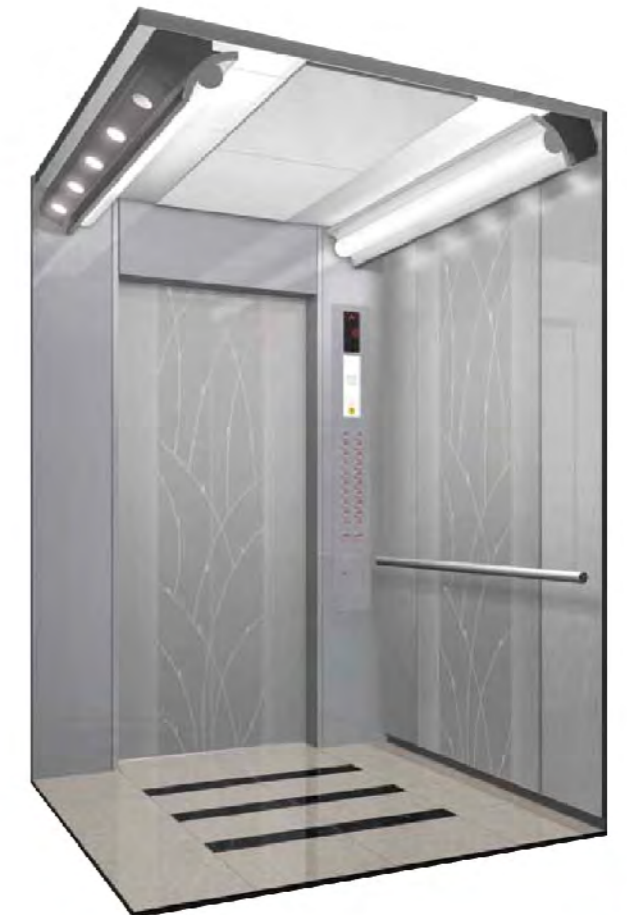
Specification

Car top: Mirror stainless steel frame , center white organic panel
 Car wall: Mirror stainless steel , mirror etching stainless steel
 Handrail: Stainless steel flat handrail
 Floor: PVC

SGM-002 ▶

Specification

Car top: Hairline stainless steel frame , both sides acrylic lighting
 Car wall: Hairline stainless steel , mirror etching stainless steel
 Handrail: Stainless steel flat handrail
 Floor: PVC

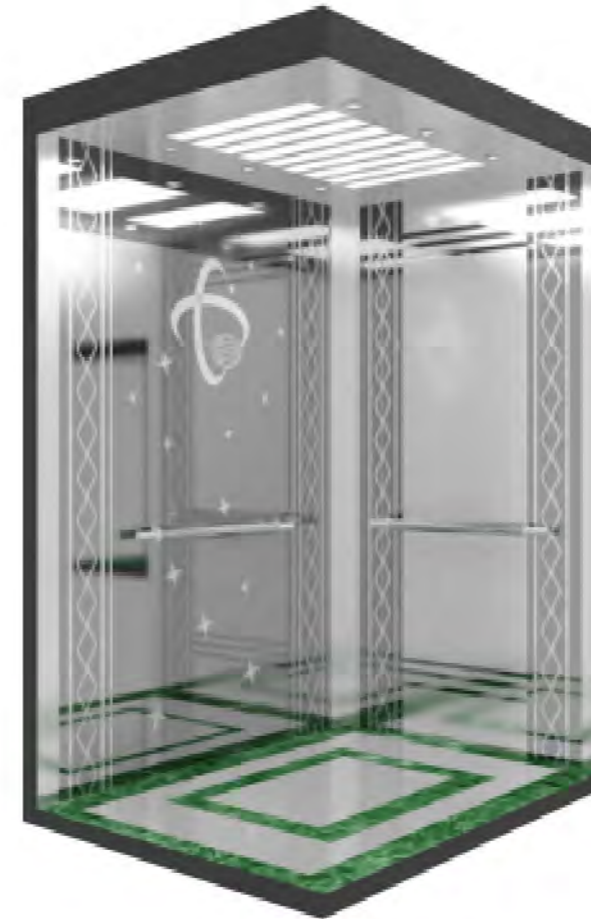




SGM-003 ◀

Specification

Car top: Mirror stainless steel , soft lighting design of arch white light-emitting panel
 Car wall: Mirror stainless steel , mirror etching stainless steel
 Handrail: C
 Floor: PVC



SGM-005 ◀

Specification

Car top: Mirror stainless steel , soft lighting design of arch white light-emitting panel
 Car wall: Hairline stainless steel , mirror etching stainless steel
 Handrail: Stainless steel flat handrail
 Floor: PVC

SGM-004 ▶

Specification

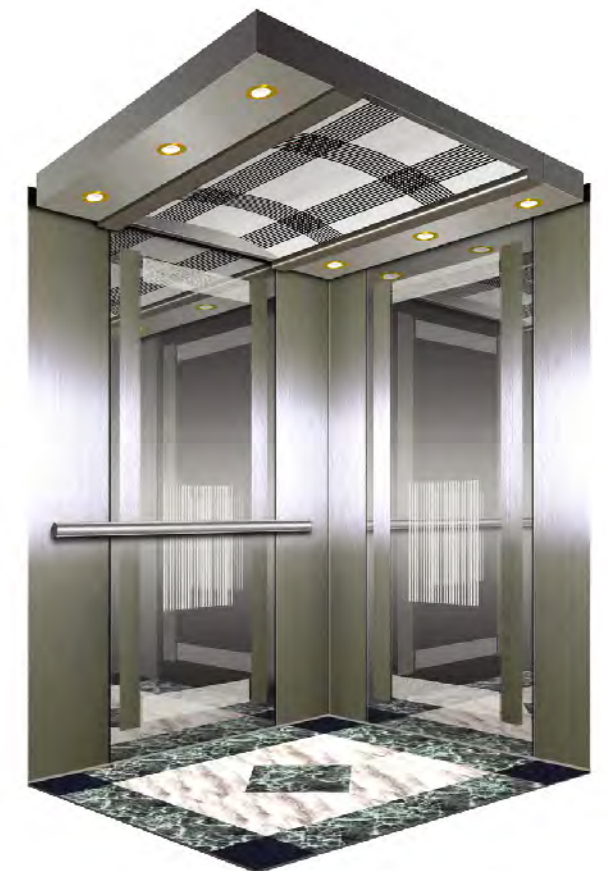
Car top: Painted steel plate frame ,acrylic light-emitting , umbrella type crystal columns
 Car wall: Mirror stainless steel , mirror etching stainless steel
 Handrail: Stainless steel flat handrail
 Floor: PVC



SGM-006 ▶

Specification

Car top: Hairline stainless steel frame , two-side acrylic lighting decoration
 Car wall: Hairline stainless steel , mirror etching stainless steel
 Handrail: Stainless steel flat handrail
 Floor: PVC





SGM-007 ◀

Specification

Car top: Hairpin stainless steel frame, middle geometric pattern with plexiglass, tube lamp
 Car wall: Hairline stainless steel, mirror etching stainless steel
 Handrail: Stainless steel round handrail
 Floor: PVC



SGM-009 ◀

Specification

Car top: Hairline stainless steel frame, arched white transparent print
 Car wall: Hairline stainless steel, Mirror etching stainless steel
 Handrail: Stainless steel round handrail
 Floor: PVC

SGM-008 ▶

Specification

Car top: Hairline stainless steel frame, two-side acrylic lighting decoration
 Car wall: Hairline stainless steel, mirror etching stainless steel
 Handrail: Stainless steel flat handrail
 Floor: PVC



SGM-010 ▶

Specification

Car top: Hairline stainless steel frame, arched white transparent panel with soft lighting design
 Car wall: Hairline stainless steel, mirror etching stainless steel
 Handrail: Hairline stainless steel flat handrail
 Floor: PVC





SGM-011 ◀

Specification

Car top: Mirror stainless steel frame with downlight , middle part of the organic board
 Car wall: Mirror stainless steel , mirror etching stainless steel
 Handrail: Stainless steel flat handrail
 Floor: PVC



SGM-013 ◀

Specification

Car top: Stainless steel mirror hollow plate with soft lighting design
 Car wall: Mirror stainless steel , mirror etching stainless steel
 Handrail: Stainless steel single tube
 Floor: PVC

SGM-012 ▶

Specification

Car top: Mirror stainless steel , acrylic lighting , downlight
 Car wall: Hairline stainless steel , mirror etching stainless steel
 Handrail: Stainless steel flat handrails
 Floor: PVC



SGM-014 ▶

Specification

Car top: Hairline stainless steel , acrylic lighting design
 Car wall: Mirror stainless steel , Marble
 Handrail: None
 Floor: PVC

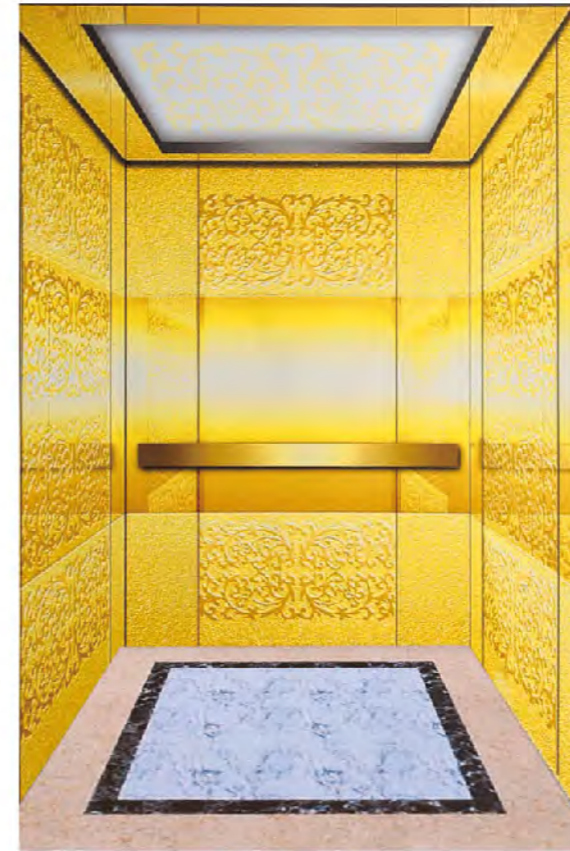




SGM-015 ◀

Specification

Car top: Mirror stainless steel is supplemented with acrylic light-emitting panel
 Car wall: Mirror, etched, titanium gold, etched
 Handrail: Single round tube made of crystal and titanium
 Floor: PVC



SGM-017 ◀

Specification

Car top: Titanium gold etching, acrylic lighting decoration
 Car wall: Titanium gold, mirror, etching
 Handrail: Titanium stainless steel flat handrail
 Floor: PVC

SGM-016 ▶

Specification

Car top: Titanium gold mirror stainless steel, acrylic light-emitting panel
 Car wall: Titanium gold mirror stainless steel, titanium gold mirror etching
 Handrail: Titanium stainless steel single pipe armrest
 Floor: PVC



SGM-018 ▶

Specification

Car top: Titanium gold mirror stainless steel frame, acrylic transparent light
 Car wall: Titanium gold hairline stainless steel, titanium gold mirror etching stainless steel
 Handrail: Wood + Titanium gold stainless steel round handrail
 Floor: PVC

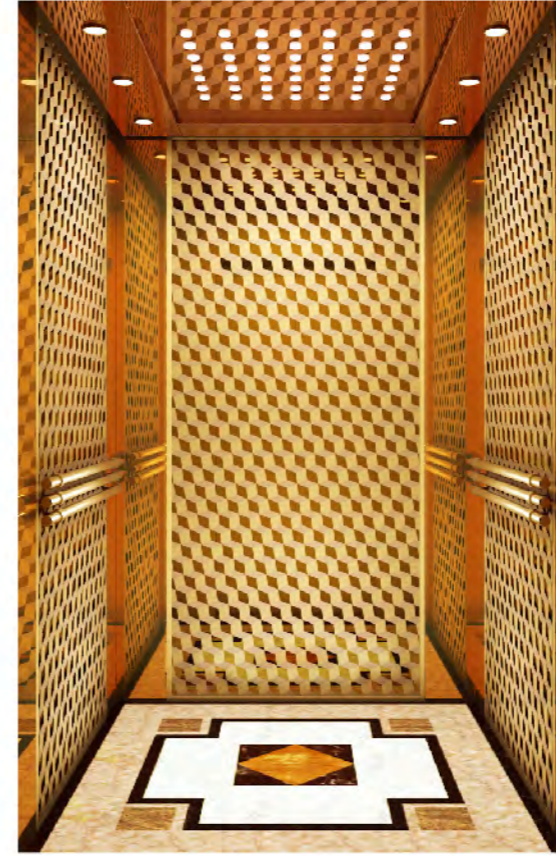




SGM-019 ◀

Specification

Car top: Mirror stainless steel frame ,acrylic light decoration ,LED light
 Car wall: Titanium gold mirror etching stainless steel ,
 titanium gold hairline stainless steel
 Handrail: Titanium gold mirror stainless steel
 Floor: PVC



SGM-021 ◀

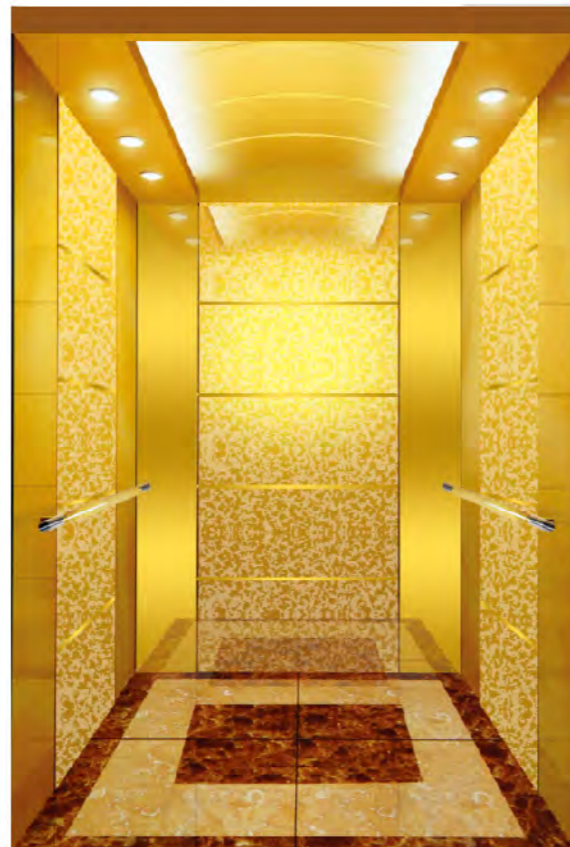
Specification

Car top: Champagne gold border , acrylic transparent board
 Car wall: Champagne gold , mirror , etching
 Handrail: Champagne gold and solid wood combination
 Floor: PVC

SGM-020 ▶

Specification

Car top: Titanium gold hairline stainless steel with tube lamp ,
 arched acrylic lighting design
 Car wall: Titanium gold hairline stainless steel , Art glass ,
 titanium gold stainless steel decoration strip
 Handrail: Titanium gold steel round handrail
 Floor: PVC

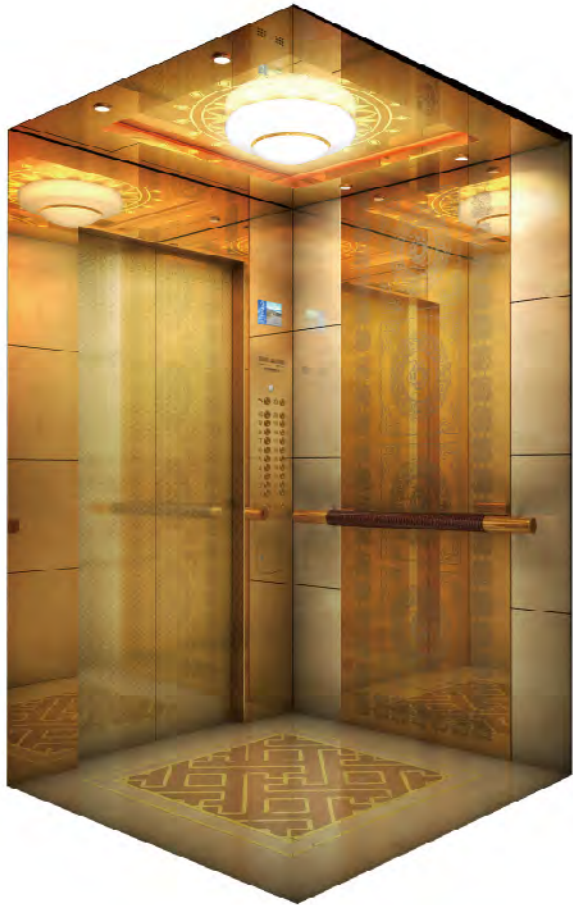


SGM-022 ▶

Specification

Car top: Mirror stainless steel , white organic panel
 Car wall: Stainless steel mirror , hairline , etched pattern
 Handrail: None
 Floor: PVC

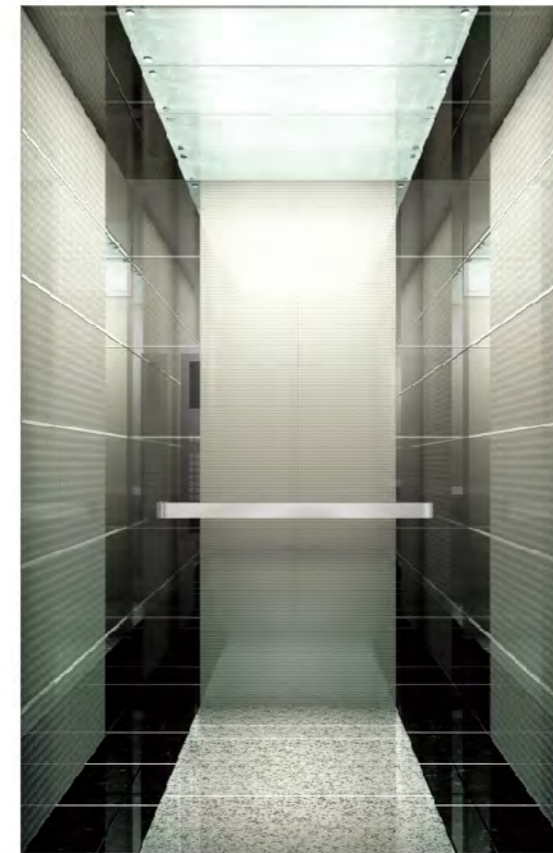




SGM-023 ◀

Specification

Car top: Titanium gold hairline stainless steel with tube lamp design , art light
 Car wall: Titanium gold mirror etching stainless steel
 Handrail: Wood + Titanium gold stainless steel round handrail
 Floor: PVC



SGM-025 ◀

Specification

Car top: Mirror stainless steel ,glass , LED lighting
 Car wall: Mirror stainless steel , art glass , stainless steel decoration strip
 Handrail: Stainless steel flat handrail
 Floor: PVC

SGM-024 ▶

Specification

Car top: Rose gold mirror stainless steel with tube lamp , white transparent panel with soft lighting design
 Car wall: Rose gold mirror etching stainless steel , hairline stainless steel
 Handrail: Rose gold stainless steel round handrail
 Floor: PVC

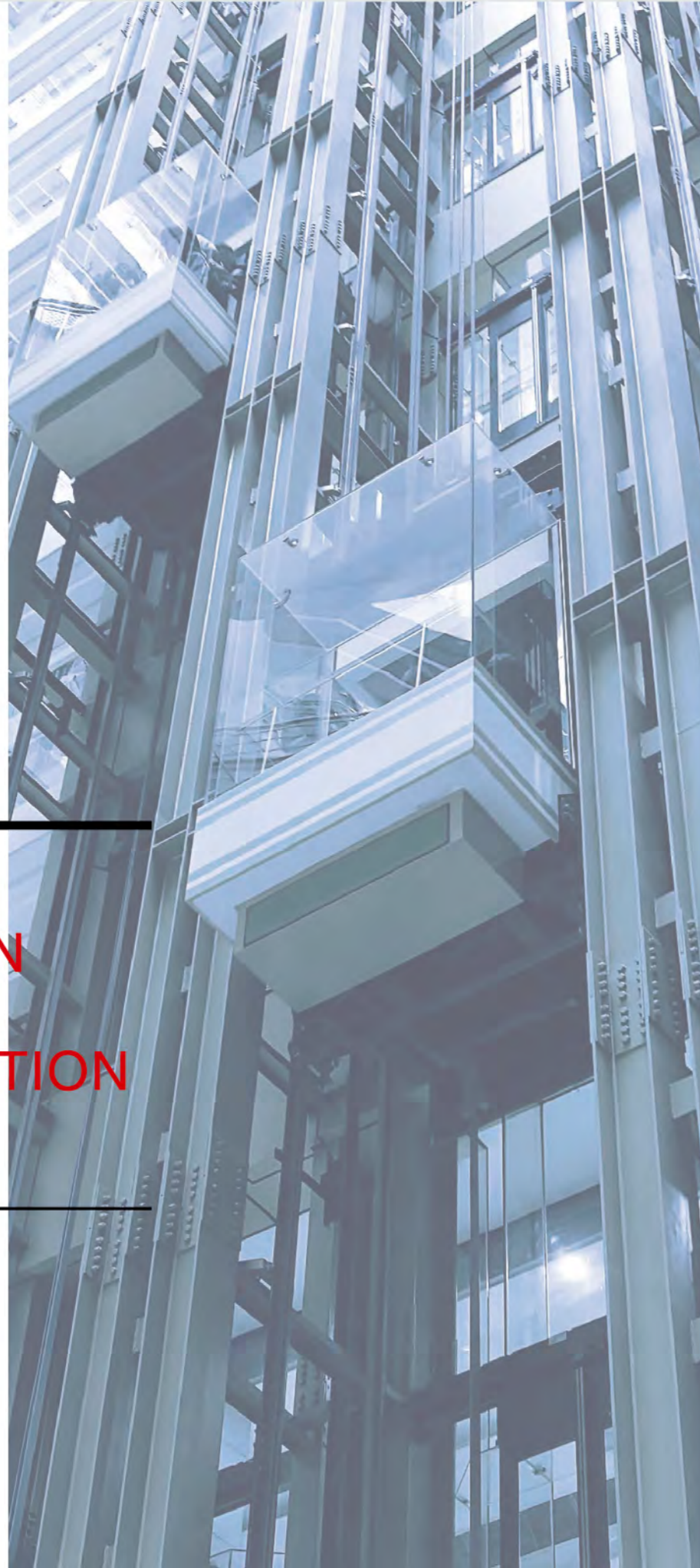


SGM-026 ▶

Specification

Car top: Mirror stainless steel border , acrylic transparent board , LED down light
 Car wall: Mirror stainless steel , marble veneer
 Handrail: Mirror stainless steel tube + titanium gold handrail
 Floor: PVC





OBSERVATION
ELEVATOR
CAR DECORATION



SGM-027

Specification

Upper / lower cover: Hairline stainless steel
 Observation wall: Safety laminated glass
 Decoration top: Hairline stainless steel , acrylic lighting decoration
 Car wall: Hairline stainless steel , etched stainless steel
 Handrail: Stainless steel double-tube
 Floor: PVC



SGM-028

Specification

Upper / lower cover: Painted steel plate ,traditional Chinese pattern
 Observation wall: 3PCS of safety laminated glass
 Decoration top: Central round star , image light-emittingpanel , four-side down lamps
 Car wall: Stainless steel hairline panel
 Handrail: Stainless steel double-tube
 Floor: PVC



SGM-029

Specification

Upper / lower cover: Painted steel plate , stainless steel skirting , decoration lamp
 Observation wall: 3PCS of safety laminated glass
 Decoration top: Round art panel model , rear soft lighting design of down lamp
 Car wall: Hairline , etched
 Handrail: Stainless steel mono-tube
 Floor: PVC



SGM-030

Specification

Upper / lower cover: Steel plate baked enamel , decoration lamp
 Observation wall: 3PCS of safety laminated glass (5+5)
 Decoration top: Central round acrylic top lamp , two-side LED
 Car wall: Hairline stainless steel
 Handrail: Stainless steel mono-tube
 Floor: PVC



SGM-031

Specification

Upper / lower cover: Round corner-cut steel plate baked enamel , acrylic light-emitting
 Observation wall: Safety laminated glass
 Decoration top: Steel plate baked enamel frame , acrylic light-emitting and down lamp
 Car wall: Hairline stainless steel
 Handrail: Stainless steel mono-tube
 Floor: PVC



SGM-032

Specification

Upper / lower cover: Hairline stainless steel
 Observation wall: Safety laminated glass
 Decoration top: Hairline stainless steel , acrylic lighting decoration, down lamp
 Car wall: Hairline stainless steel
 Handrail: Stainless steel mono-tube
 Floor: PVC



SGM-033

Specification

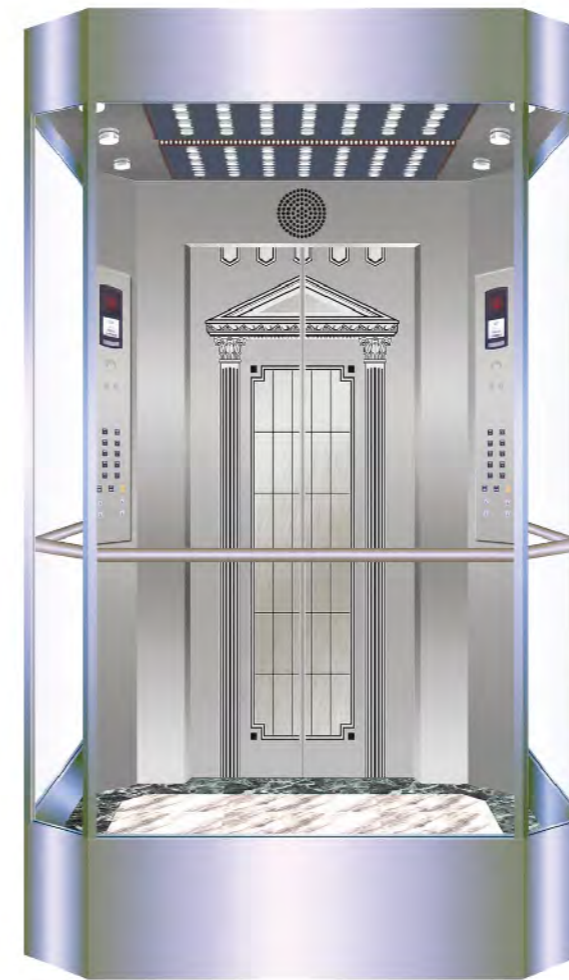
Upper / lower cover: Steel plate baked enamel , acrylic lighting decoration
 Observation wall: Safety laminated glass
 Decoration top: Mirror stainless steel , acrylic arch top panel , down lamp
 Car wall: Hairline stainless steel panel
 Handrail: Φ38 stainless steel tube
 Floor: PVC



SGM-034

Specification

Upper / lower cover: Steel plate baked enamel , acrylic lighting decoration
 Observation wall: Safety laminated glass
 Decoration top: Multi-ply reflection of light panel is supplemented with four-side waist light-emitting holes , lighting design of organic light pole , soft 3D light
 Car wall: Laminated glass
 Handrail: Φ38 stainless steel tube
 Floor: PVC



SGM-035

Specification

Upper / lower cover: Painted steel plate
 Observation wall: Safety laminated glass
 Decoration top: Hairline stainless steel , acrylic lighting decoration
 Car wall: Safety laminated glass
 Handrail: Stainless steel round handrail
 Floor: PVC



SGM-036

Specification

Upper / lower cover: Mirror stainless steel
 Observation wall: Safety laminated glass
 Decoration top: Hairline stainless steel , acrylic lighting decoration
 Car wall: Mirror stainless steel , safety laminated glass
 Handrail: Mirror stainless steel hairline panel
 Floor: PVC

FREIGHT
ELEVATOR
CAR DECORATION



SGM-037 ▲

Specification

Ceiling: Paint steel
Car wall/Car Door: Paint steel
Illumination: Energy-saving light
Door opening mode: Side opening
Floor: Checkered plate



SGM-038 ▲

Specification

Ceiling: Hairline stainless steel
Car wall/Car Door: Hairline stainless steel
Illumination: Energy-saving light
Door opening mode: Center-opening & double folded tybe
Floor: Checkered plate

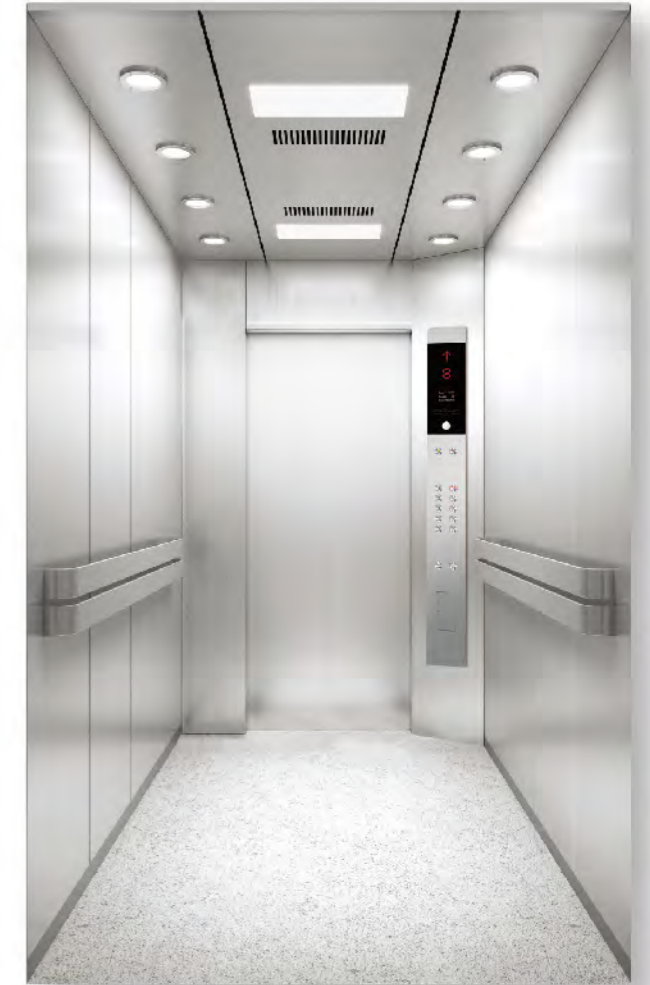
BED ELEVATOR
CAR DECORATION



SGM-039 ▲

Specification

Car top: Paint steel , LED lighting
Car wall: Hairline stainless steel
Handrail: Double flat stainless steel
Floor: PVC



SGM-040 ▲

Specification

Car top: Paint steel , LED lighting , downlight
Car wall: Hairline stainless steel
Handrail: Double flat stainless steel
Floor: PVC

OPERATION PANDEL SERIES



C001
(Optional)



L001



C002
(Optional)



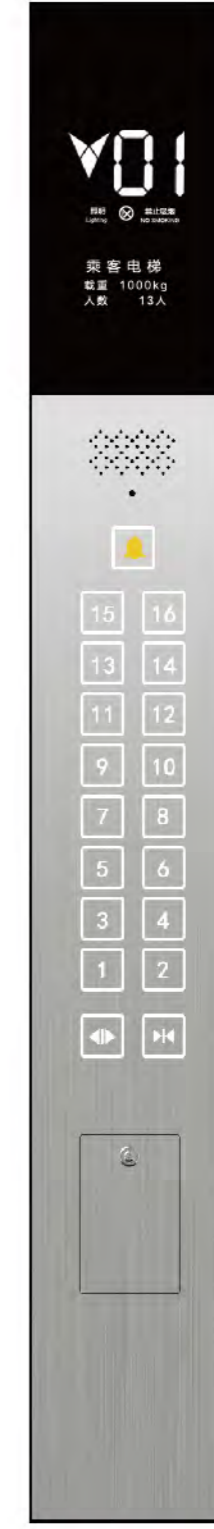
L002



C003
(Optional)



L003



C004
(Optional)



L004



C005
(Optional)



L005



C006
(Optional)



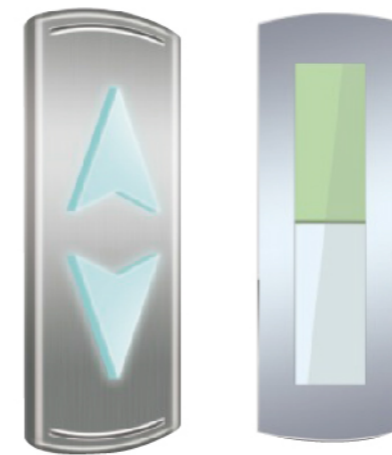
L006

Call box (No bottom box series)



WH01 WH02 WH03 WH04 WH05 WH06

Hall lantern series



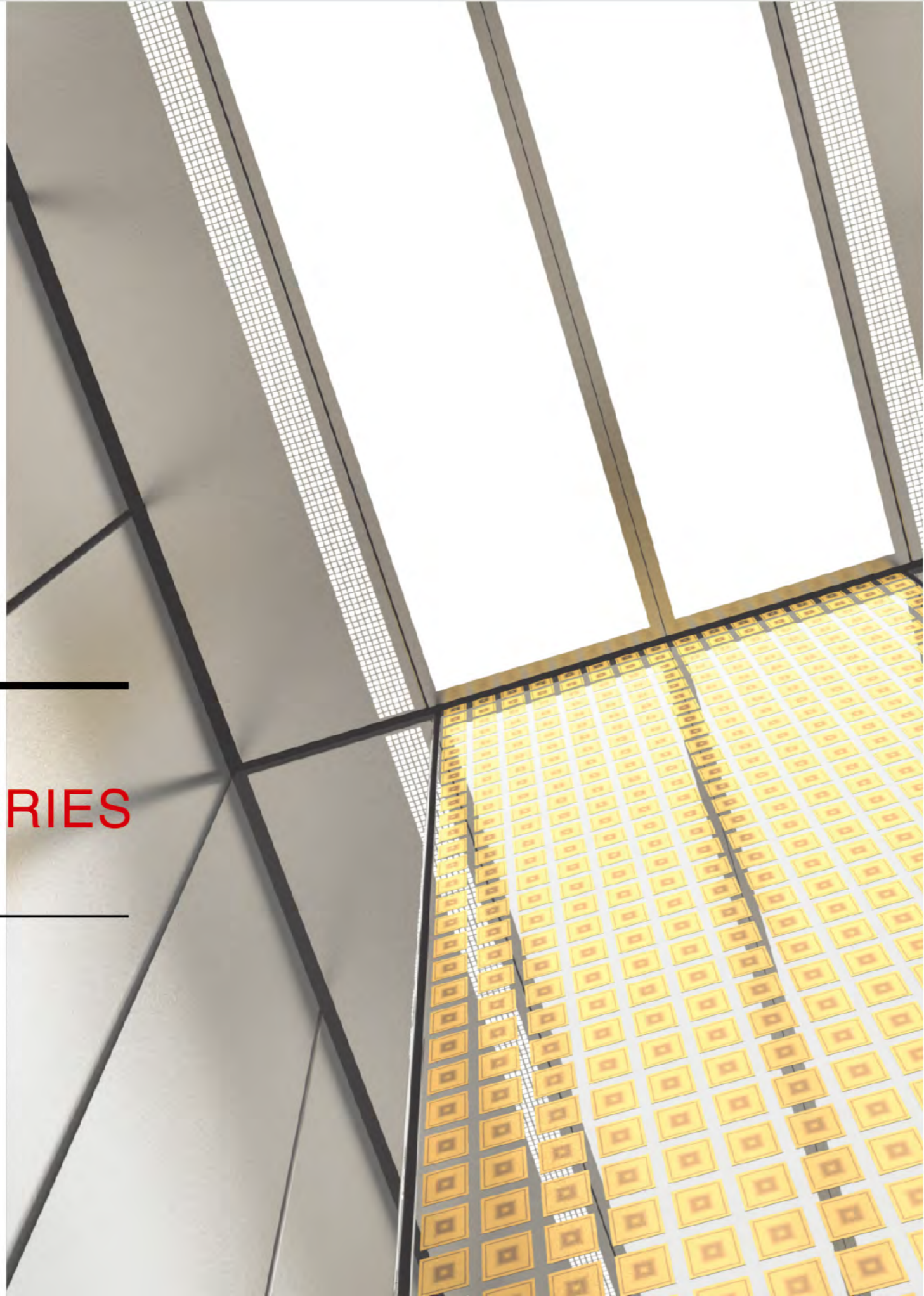
DZ01 DZ02

Outside the hall monitor



HX001 HX002 HX003 HX004

CEILING SERIES



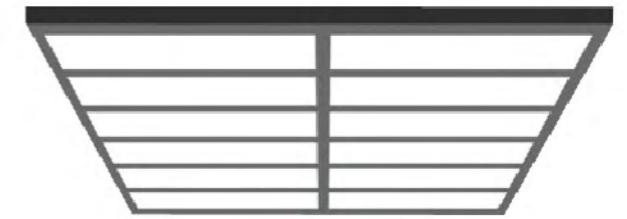
▲ C-T001

Mirror stainless steel, acrylic



▲ C-T002

Mirror stainless steel, acrylic



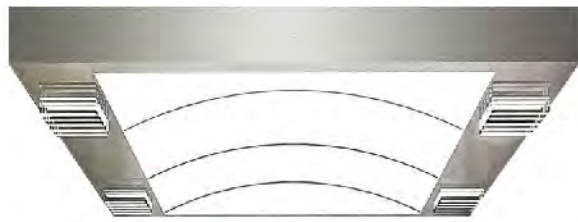
▲ C-T003

Stainless steel side frame , soft lighting design of arch wuhite light-emitting panel



▲ C-T004

Stainless steel , acrylic , LED downlight



▲ C-T005

White arch light-emitting panel , stainless steel mirror frame , strip light decoration



▲ C-T007

Stainless steel side frame , soft lighting design of arch white light-emitting panel



▲ C-T009

Mirror stainless steel, acrylic



▲ C-T006

The cylindrical hollow transparent lamp, soft lighting design with arched white transparent plate



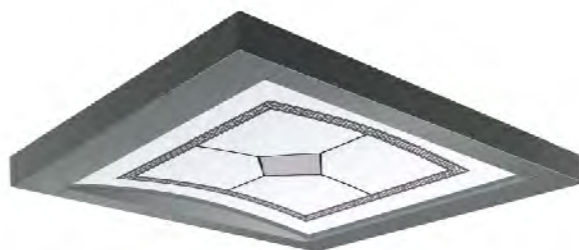
▲ C-T008

Hairline stainless steel frame, white transparent board, downlight



▲ C-T010

Soft lighting design of multilayer reflector with golden downlight



▲ C-T011

Soft lighting design of wide image dome



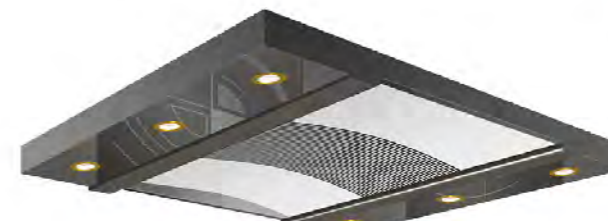
▲ C-T012

Soft lighting design of middle column and the golden white acrylic lamp



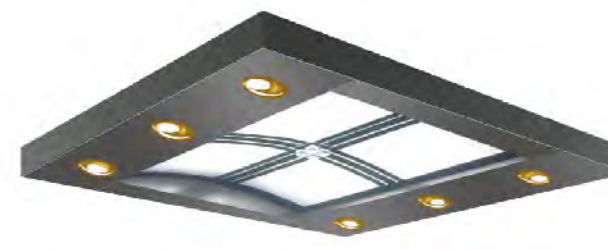
▲ C-T014

Mirror stainless steel, acrylic



▲ C-T016

The middle image roof, both sides for soft illumination design of stainless steel floor with downlight



▲ C-T018

In the spraying steel plate floor with golden bridge wall shine tube lamp and the middle part is soft lighting design of the arch white organic transparent plate



▲ C-T013

The middle image roof, both sides for soft illumination design of stainless steel floor with downlight



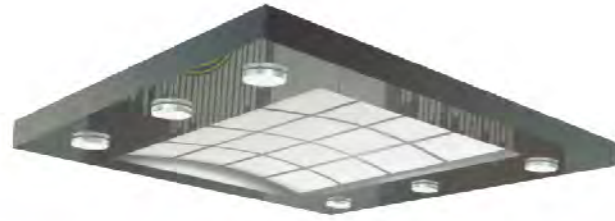
▲ C-T015

Hanging lamp board and soft lighting design with square image subject downlight



▲ C-T017

Diamond hollow transparent light pole , soft lighting design of arch white light-emitting panel



▲ C-T019

Cylindrical hollow transparent light pole , soft lighting design of arcy white light-emitting panel



▲ C-T021

Steel plate plastic-jet frame , acrylic lighting decoration



▲ C-T023

The middle image is flat on both sides, for soft illumination design of stainless steel floor with downlight



▲ C-T020

Soft lighting design and image roof on both sides of rhombic hollow transparent lamp post



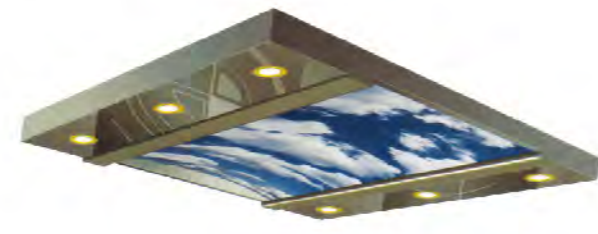
▲ C-T022

The middle image roof, both sides for soft illumination design of stainless steel floor with downlight (image can provide)



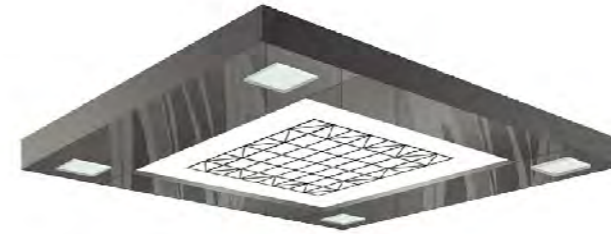
▲ C-T024

The middle image roof, both sides for soft illumination design of stainless steel floor with downlight (image can provide)



▲ C-T025

The middle image roof, both sides for soft illumination design of stainless steel floor with downlight (image can provide)



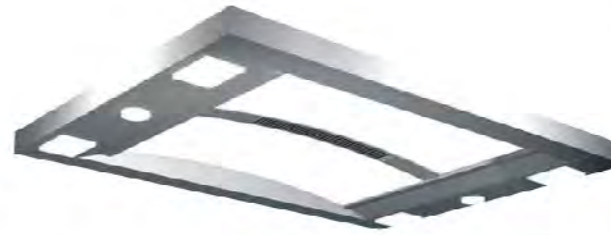
▲ C-T026

The middle image is flat, soft lighting design of stainless steel floor with hollow diamond transparent lamp



▲ C-T028

Double-arch white organic light-shade panel , central soft lighting design of diamond transparent light pole



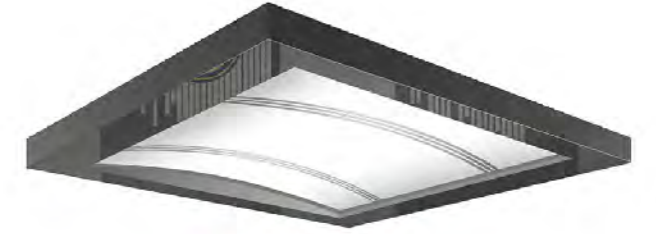
▲ C-T030

Stainless steel frame , central arch acrylic lighting decoration



▲ C-T032

Double-arch white organic light-emitting panel , central soft lighting design of down lamp



▲ C-T027

Soft lighting design of broad arch white light-emitting panel



▲ C-T029

painted steel plate frame , white acrylic light-emitting



▲ C-T031

Painted steel plate light-box , down lamp lighting

LANDING DOOR SERIES



SGM-M001

Mirror, hairline



SGM-M002

Mirror, hairline



SGM-M003

Mirror, etching



SGM-M004

Mirror, etching



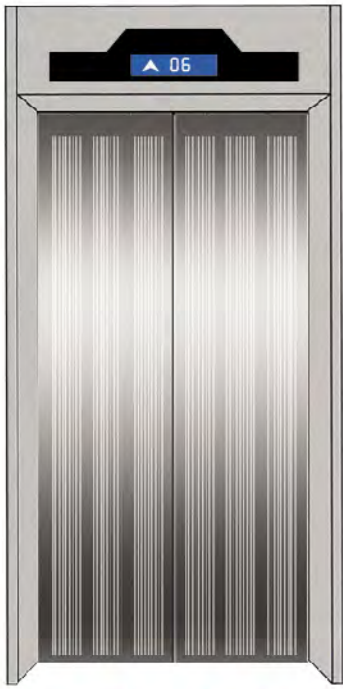
SGM-M005

Mirror, etching



SGM-M006

Mirror, etching



SGM-M007
Mirror, etching



SGM-M008
Mirror, hairline, etching



SGM-M009
Mirror, etching



SGM-M013
Mirror, etching, irregular grain



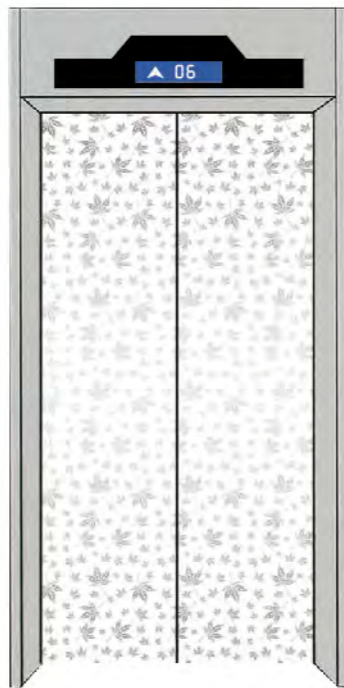
SGM-M014
Hairline, etching, titanium



SGM-M015
Mirror, etched, hairline, irregular grain, titanium gold



SGM-M010
Mirror, etching



SGM-M011
Mirror, etching



SGM-M012
Mirror, etching



SGM-M016
Etched, hairline, titanium gold



SGM-M017
Mirror, etching



SGM-M018
Mirror, etching, hairline



SGM-M019
Mirror, etching



SGM-M020
Mirror, etching, hairline



SGM-M021
Mirror, etching, hairline



SGM-M025
Mirror, etching



SGM-M026
Mirror, etching, hairline



SGM-M027
Etching, hairline



SGM-M022
Mirror, etching, hairline



SGM-M023
Mirror, etching, hairline



SGM-M024
Mirror, etching, hairline



SGM-M028
Mirror, etching, hairline



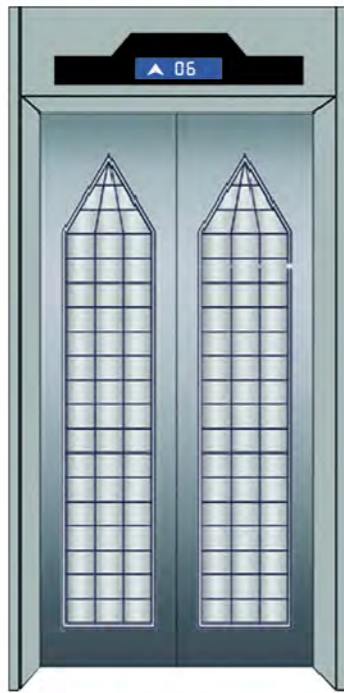
SGM-M029
Mirror, etching, hairline



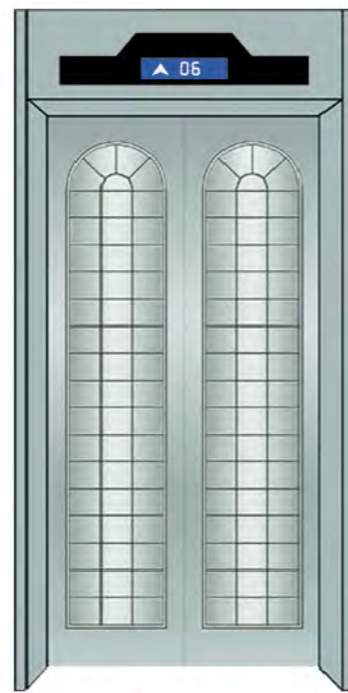
SGM-M030
Mirror, etching



SGM-M031
Hairline, etching



SGM-M032
Hairline, etching



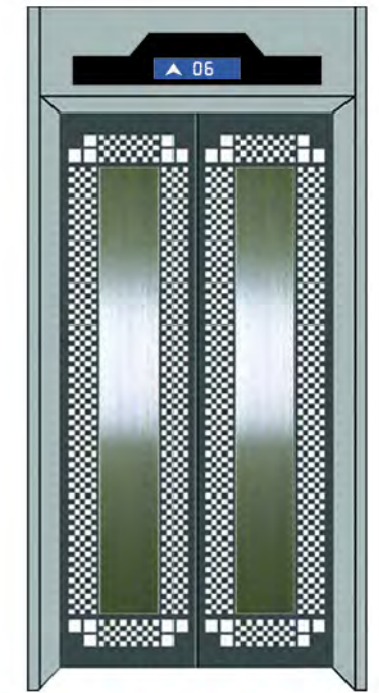
SGM-M033
Mirror, etching



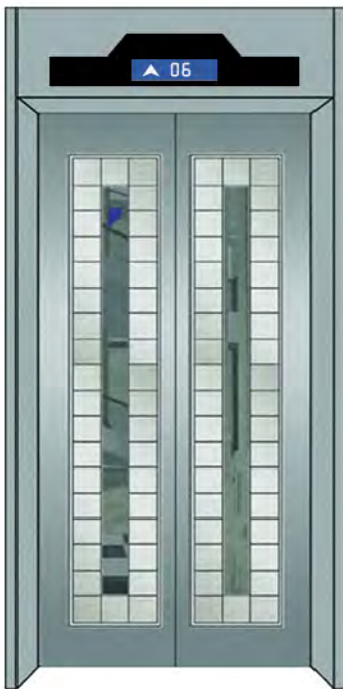
SGM-M037
Hairline, etching



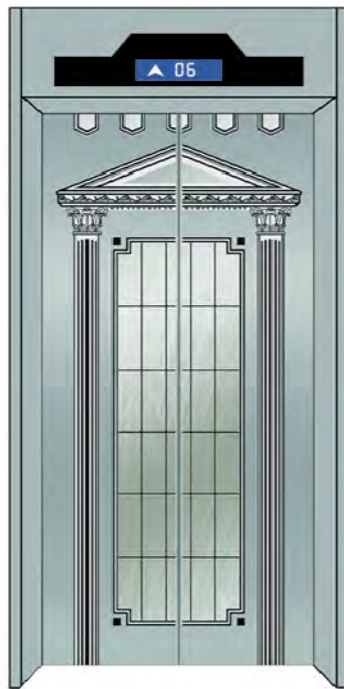
SGM-M038
Hairline, etching



SGM-M039
Hairline, etching



SGM-M034
Mirror, hairline, etching



SGM-M035
Mirror, hairline, etching



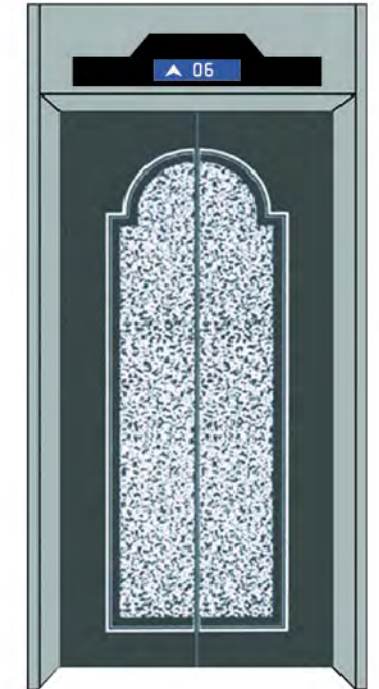
SGM-M036
Mirror, etched



SGM-M040
Mirror, etched, irregular grain



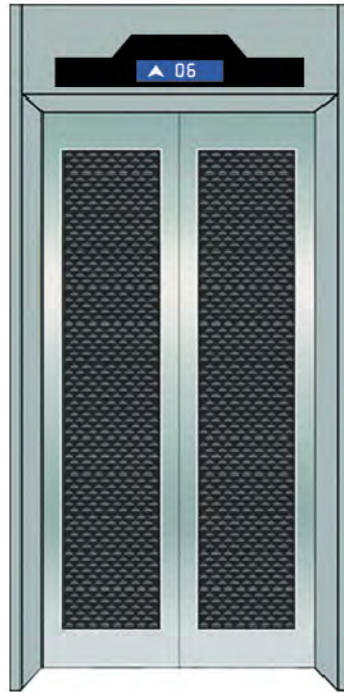
SGM-M041
Mirror, etched, irregular grain



SGM-M042
Mirror, etched



SGM-M043
Hairline, etching



SGM-M044
Hairline, etching



SGM-M045
Mirror, etched



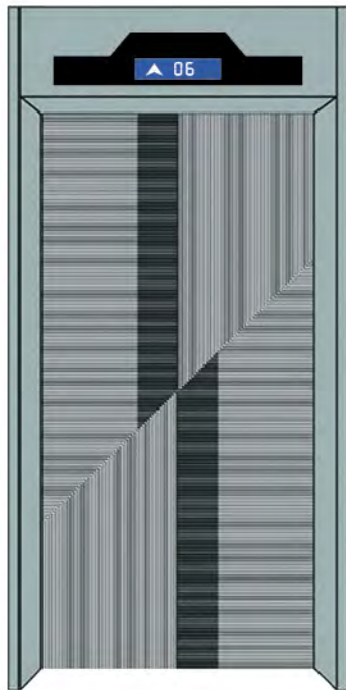
SGM-M049
Titanium gold,mirror,etched



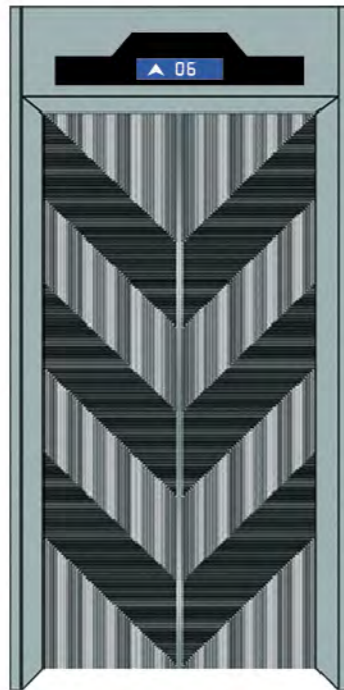
SGM-M050
Titanium gold,mirror,etched



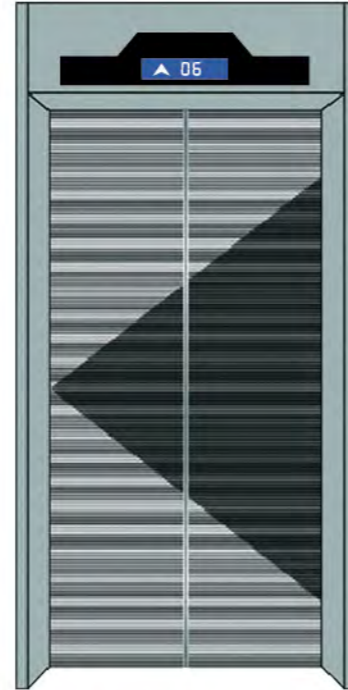
SGM-M051
titanium,mirror,etched,hairline,
Irregular grain



SGM-M046
Hairline, etching



SGM-M047
Hairline, etching



SGM-M048
Hairline, etching



SGM-M052
Titanium gold,mirror,etched



SGM-M053
Titanium gold,mirror,etched

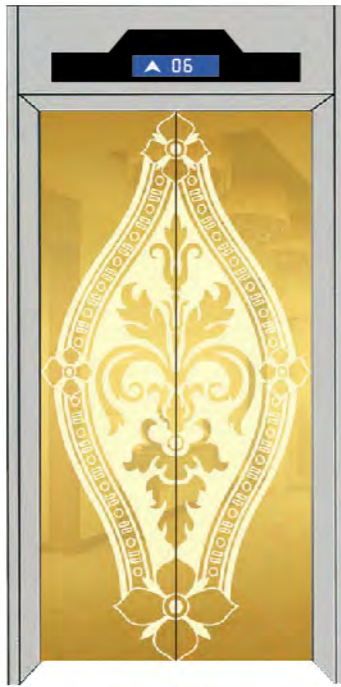


SGM-M054
Titanium gold,mirror,etched



SGM-M055

Titanium gold,mirror,etched



SGM-M056

Titanium gold,mirror,etched



SGM-M057

Titanium gold,mirror,etched



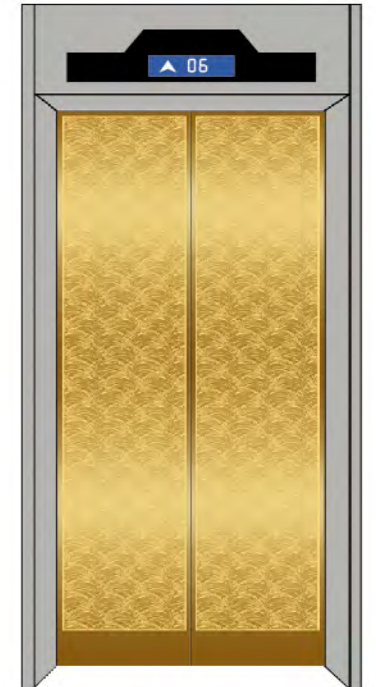
SGM-M061

Titanium gold,mirror,etched



SGM-M062

Titanium gold,mirror,etched



SGM-M063

Titanium gold,mirror,etched



SGM-M058

Titanium gold,mirror,etched



SGM-M059

Titanium gold,mirror,etched



SGM-M060

Titanium gold,mirror,etched



SGM-M064

Titanium gold,mirror,etched



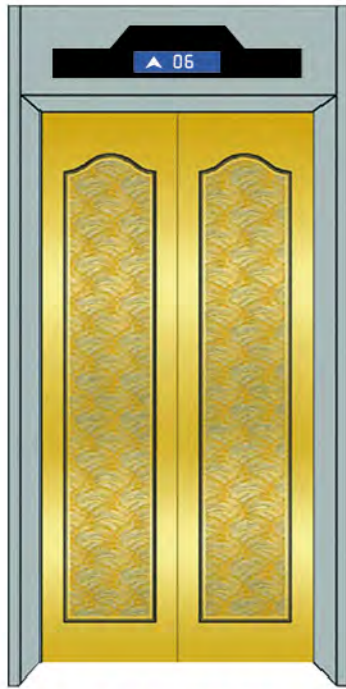
SGM-M065

Titanium gold,mirror,etched



SGM-M066

Titanium gold,mirror,etched



SGM-M067
Titanium gold, etching



SGM-M068
Titanium gold, etching



SGM-M069
Titanium gold, etching



SGM-M073
Rose gold, etching



SGM-M074
Rose gold, etching



SGM-M075
Rose gold, etching



SGM-M070
Titanium gold, etching



SGM-M071
Titanium, mirror, etching, Irregular grain



SGM-M072
Titanium, mirror, etching, Irregular grain



SGM-M076
Rose gold, etching



SGM-M077
Rose gold, etching



SGM-M078
Rose gold, etching

HANDRAIL SERIES



SGM-F001 Stainless steel tube matte hairline ϕ 51x1000 (mm)



SGM-F002 Titanium gold matte hairline mono-tube ϕ 51x1000 (mm)



SGM-F003 Double combination of mirror and stainless steel tube ϕ 51x1000 (mm)



SGM-F004 Double combination of titanium gold and stainless steel tube ϕ 51x1000 (mm)



SGM-F005 Triple combination of stainless steel tube mirror ϕ 51x1000 (mm)



SGM-F006 Triple combination of titanium gold stainless steel tube ϕ 51x1000 (mm)



SGM-F007 Combination of titanium gold and stainless steel tube mirror ϕ 51x1000 (mm)



SGM-F008 Combination of log and titanium gold ϕ 51x1000 (mm)



SGM-F009 Log ϕ 51x1000 (mm)



SGM-F010 Organic column handrail ϕ 51x1000 (mm)



SGM-F011 6mm stainless steel short grain, arc head ϕ 80x1000 (mm)



SGM-F012 6mm stainless steel titanium gold short grain, arc head ϕ 80x1000 (mm)



SGM-F013 6mm stainless steel titanium gold short grain, etched, arc head ϕ 80x1000 (mm)



SGM-F014 Stainless steel short grain, square head ϕ 51x1000 (mm)



SGM-F015 Stainless steel titanium gold hairline, square head ϕ 80x1000 (mm)



SGM-F016 Hairline panel square handrail ϕ 80x1000 (mm)



SGM-F017 Anatto twist ϕ 51x1000 (mm)



SGM-F018 Marble handrail ϕ 51x1000 (mm)



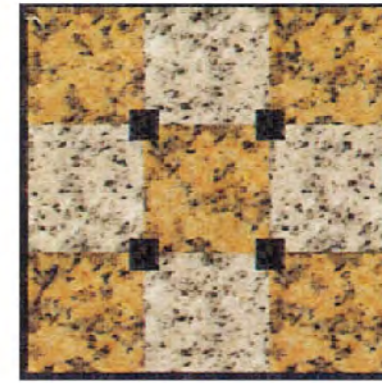
SGM-F019 Oval wooden and titanium gold combined handrail ϕ 51x1000 (mm)



FLOOR SERIES



SGM-D007



SGM-D008



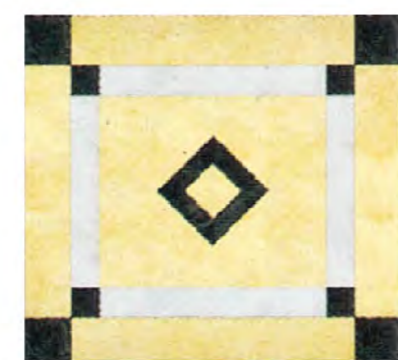
SGM-D009



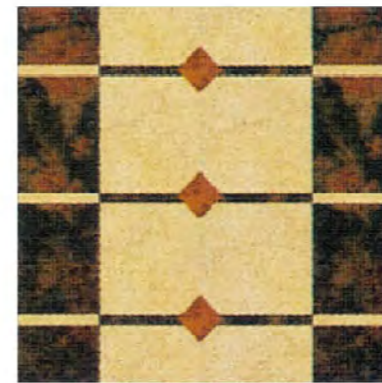
SGM-D001



SGM-D002



SGM-D003



SGM-D010



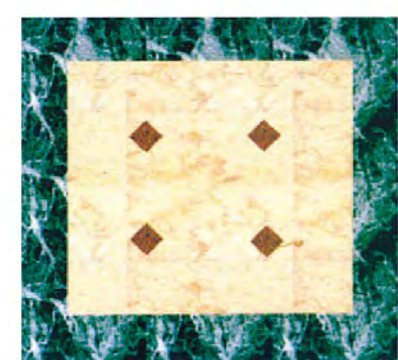
SGM-D011



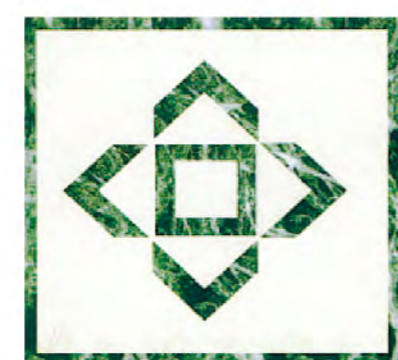
SGM-D012



SGM-D004



SGM-D005



SGM-D006



SGM-D013

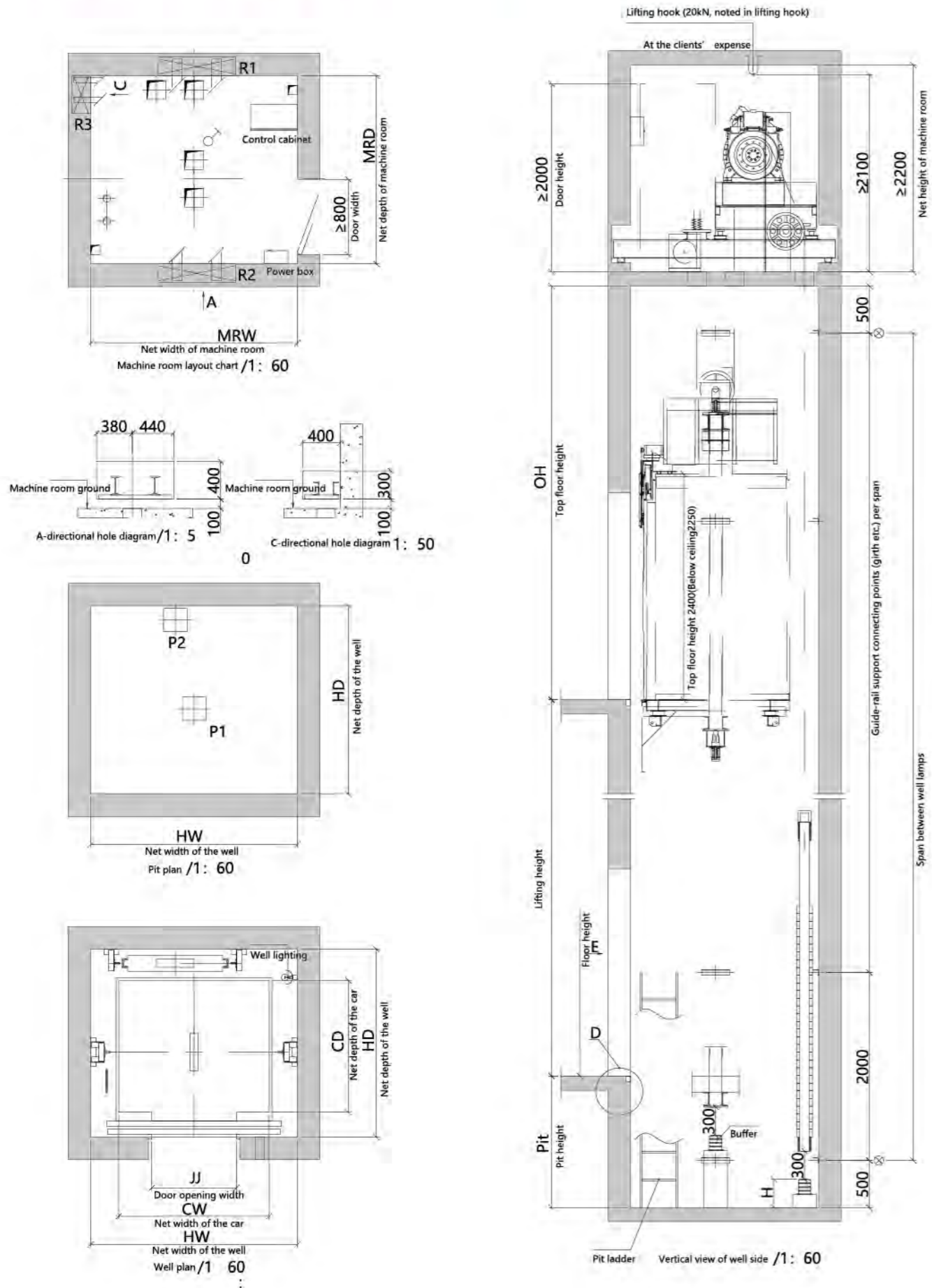


SGM-D014



SGM-D015

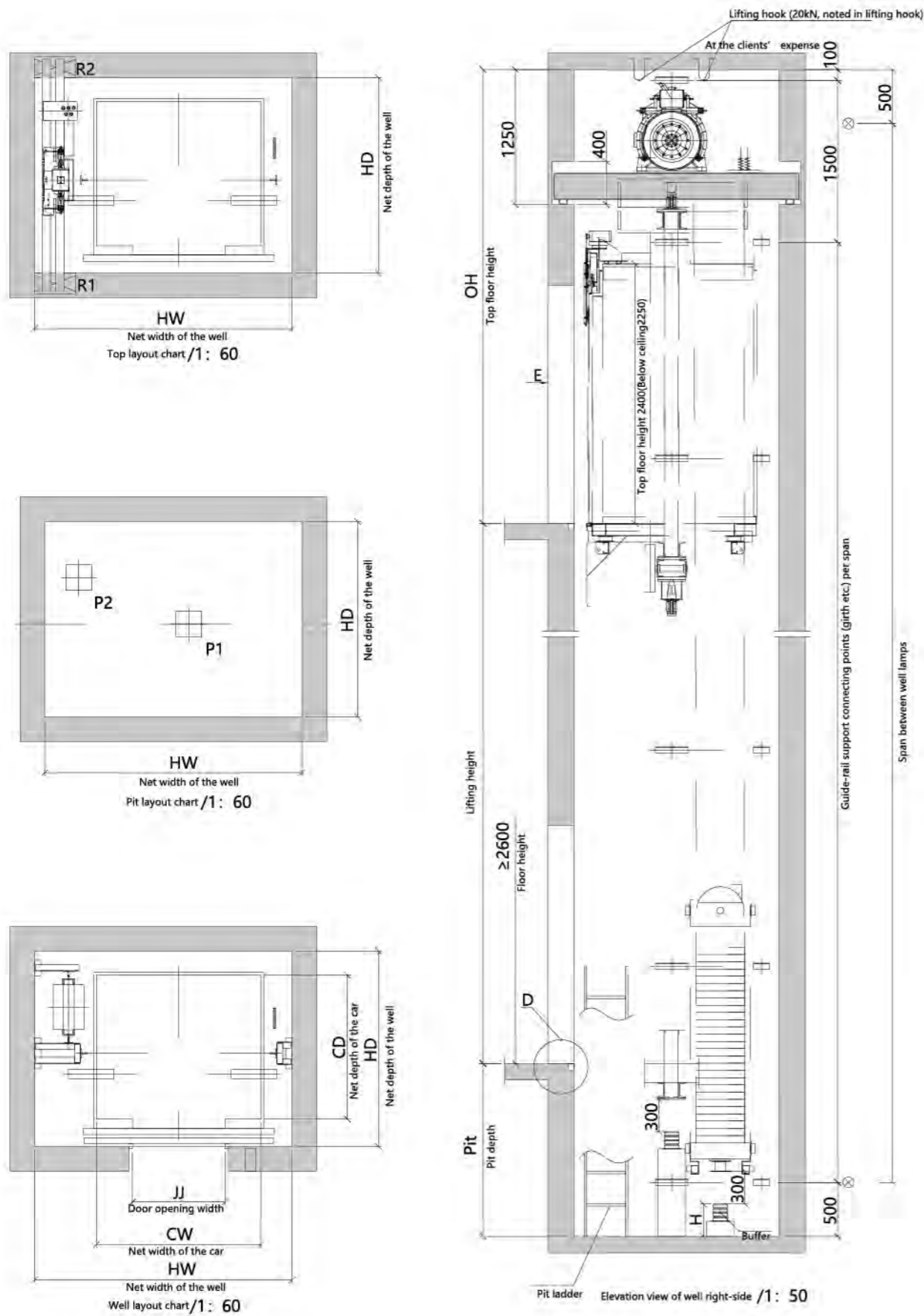
SMALL MACHINE ROOM PASSENGER ELEVATOR CONSTRUCTION SKETCH



Model	Load KG	Passenger NO.	speed m/s	Car specification CWxCD	Door opening size JJxOPH	Well size HWxHD	Machine room size MRWxMRD	Pit depth Pit.	Top floor height OH	Power	(N) Acting force				
											R1	R2	R3	P1	P2
TKJ450/1.0	450	6	1	1100x1100	700x2100	1700x1700	1700x1700	1400	4500	3.2	28800	17200	1900	44000	35000
TKJ450/1.5			1500					4600	4.9						
TKJ630/1.0	630	8	1	1400x1100	800x2100	2000x1700	2000x1700	1400	4500	4.3	35200	21800	4300	58000	45600
TKJ630/1.5			1500					4600	6.4						
TKJ630/1.75			1600					4700	7.5						
TKJ800/1.0	800	10	1	1400x1350	800x2100	2000x2000	2000x2000	1400	4500	5.4	44800	27400	5400	72000	56000
TKJ800/1.5			1500					4600	8.1						
TKJ800/1.75			1600					4700	9.4						
TKJ1000/1.0	1000	13	1	1600x1400	900x2100	2200x2000	2200x2000	1400	4500	6.7	53400	32200	6000	88000	68000
TKJ1000/1.5			1500					4600	10						
TKJ1000/1.75			1600					4700	11.7						
TKJ1150/1.0	1150	15	1	1900x1400	1000x2100	2500x2100	2500x2100	1400	4600	7.8	55600	36300	7800	98000	75000
TKJ1150/1.5			1500					4700	11.7						
TKJ1150/1.75			1600					4800	13.6						
TKJ1250/1.0	1250	16	1	1900x1500	1100x2100	2500x2200	2500x2200	1400	4600	8.5	60400	39400	8500	106000	81000
TKJ1250/1.5			1500					4700	12.7						
TKJ1250/1.75			1600					4800	14.9						
TKJ1350/1.0	1350	18	1	1900x1600	1100x2100	2500x2300	2500x2300	1400	4600	9.2	67200	43400	8700	114000	87000
TKJ1350/1.5			1500					4700	13.8						
TKJ1350/1.75			1600					4800	16.1						
TKJ1600/1.0	1600	21	1	2000x1750	1200x2100	2600x2450	2600x2450	1400	4600	11	73600	47600	9600	128000	96000
TKJ1600/1.5			1500					4700	16.6						
TKJ1600/1.75			1600					4800	19.4						

(The data is for design reference only. Regarding detailed parameters, please take technical drawing as criterion.)
 Note: If specification exceeds above range, please contact SIGMA Elevator Company.

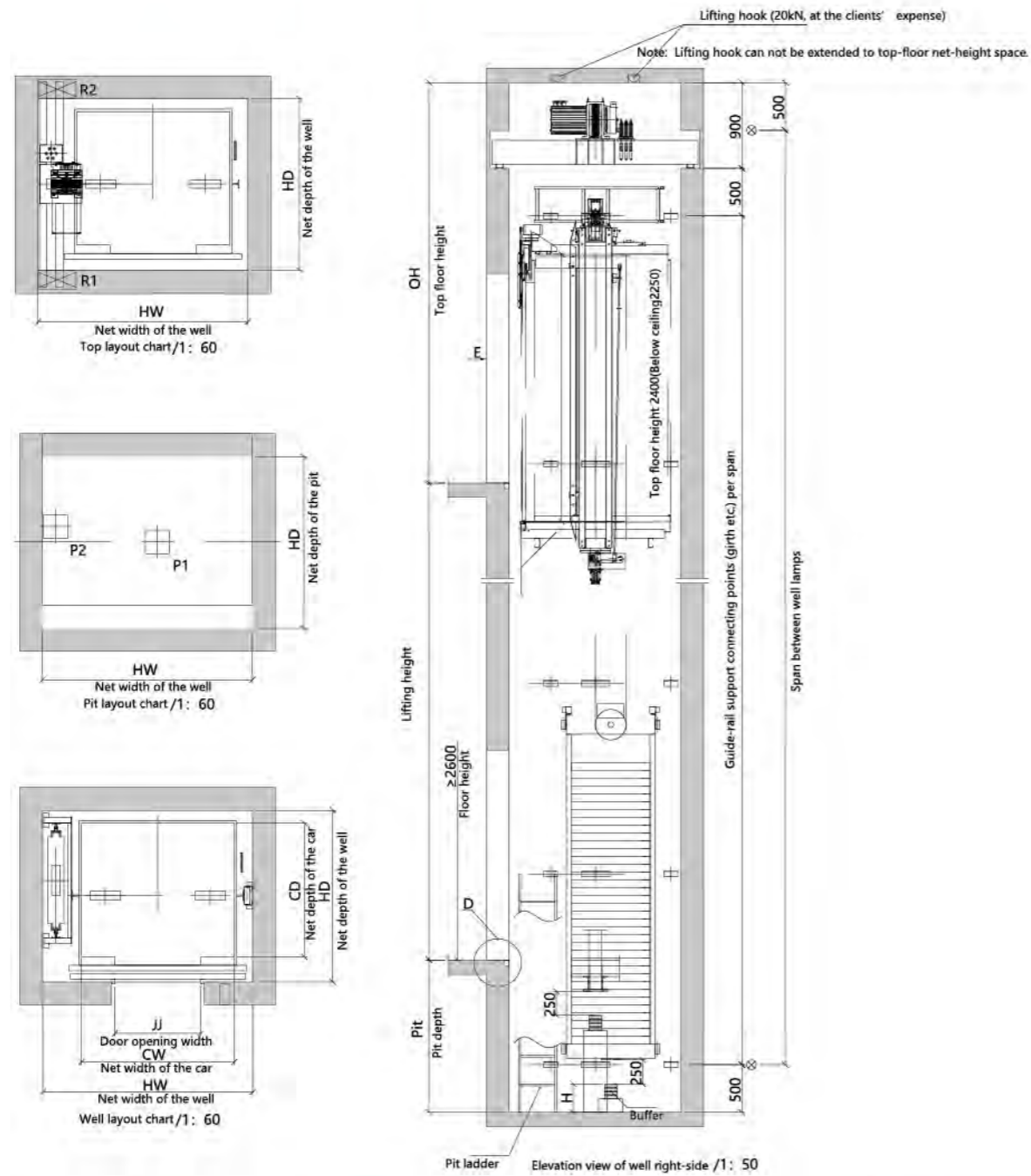
MACHINE ROOM-LESS PASSENGER ELEVATOR CONSTRUCTION SKETCH (ECONOMICAL)



Model	Load KG	Passenger NO.	speed m/s	(mm) Car specification CWxCD	(mm) Door opening size JJxOPH	(mm) Well size HWxHD	(mm) Pit depth Pt	(mm) Top floor height OH	Power	(N) Acting force			
										R1	R2	P1	P2
TKJW450/1.0	450	6	1	1100x1100	700x2100	2000x1700	1600	4300	3.2	16500	21000	44000	35000
TKJW450/1.5			1.5										
TKJW630/1.0	630	8	1	1400x1100	800x2100	2300x1700	1600	4300	4.3	19800	26400	58000	45600
TKJW630/1.5			1.5										
TKJW630/1.75			1.75										
TKJW800/1.0	800	10	1	1400x1350	800x2100	2300x1800	1600	4300	5.4	25700	27100	72800	56000
TKJW800/1.5			1.5										
TKJW800/1.75			1.75										
TKJW1000/1.0	1000	13	1	1600x1400	900x2100	2500x1900	1600	4300	6.7	27400	39600	88000	68000
TKJW1000/1.5			1.5										
TKJW1000/1.75			1.75										
TKJW1150/1.0	1150	15	1	1900x1400	1000x2100	2800x2000	1600	4300	7.8	30400	43600	92000	75000
TKJW1150/1.5			1.5										
TKJW1150/1.75			1.75										
TKJW1250/1.0	1250	16	1	1900x1500	1100x2100	2900x2000	1600	4300	8.5	32200	46800	106000	81000
TKJW1250/1.5			1.5										
TKJW1250/1.75			1.75										
TKJW1350/1.0	1350	18	1	1900x1600	1100x2100	2900x2400	1600	4400	9.2	37600	46400	114000	87000
TKJW1350/1.5			1.5										
TKJW1350/1.75			1.75										
TKJW1600/1.0	1600	21	1	2000x1750	1200x2100	3000x2400	1600	4400	11	39600	56500	128000	96000
TKJW1600/1.5			1.5										
TKJW1600/1.75			1.75										

(The data is for design reference only. Regarding detailed parameters, please take technical drawing as criterion.)
 Note: If specification exceeds above range, please contact SIGMA Elevator Company.

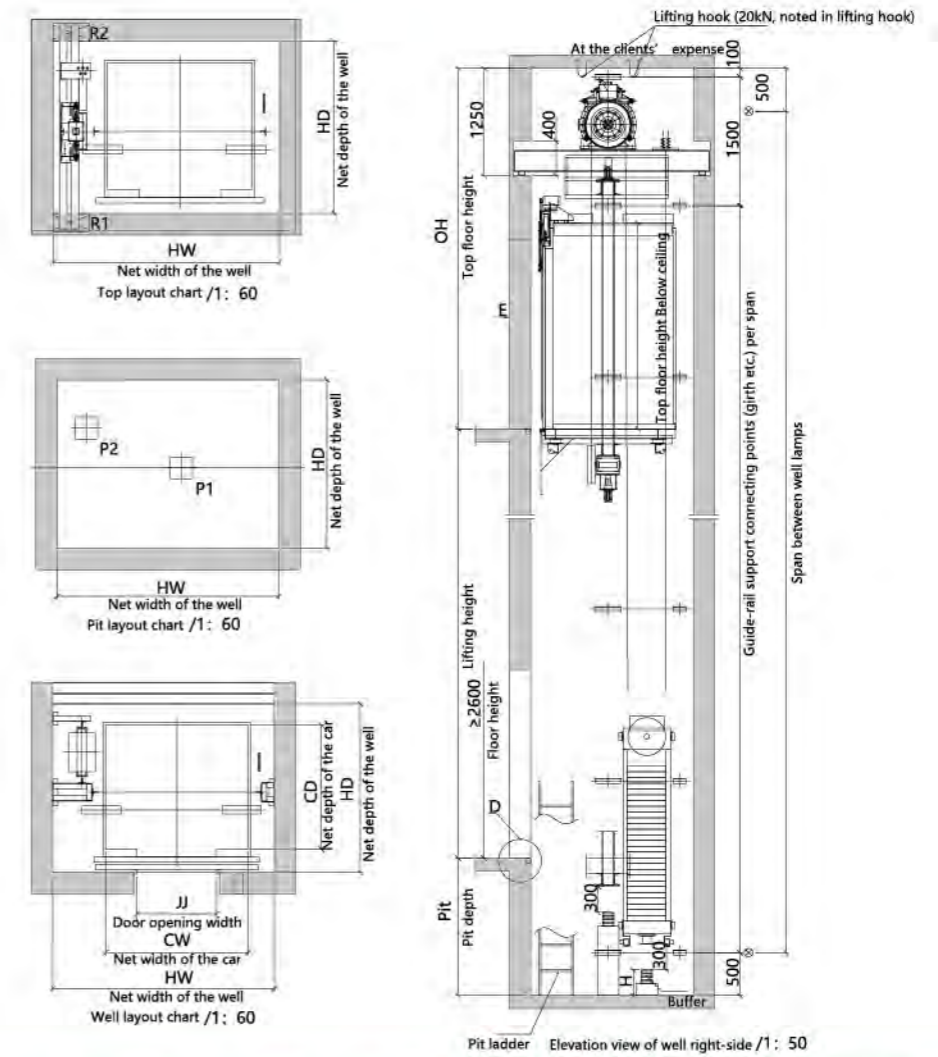
MACHINE ROOM-LESS PASSENGER ELEVATOR CONSTRUCTION SKETCH (COMPACT)



Model	Load KG	Passenger speed NO. m/s	(mm) Car specification CWxCD	(mm) Door opening size JJxOPH	(mm) Well size HWxHD	(mm) Pit depth Pit	(mm) Top floor height OH	Power	(N) Acting force			
									R1	R2	P1	P2
TKJW630/1.0	630	8	1200x1350	700x2100	1850x1750	1500	4600	4.0	19800	26400	58000	45600
TKJW630/1.5		1.5				1700	4800	7.3				
TKJW630/1.75		1.75				1700	4800	7.3				
TKJW800/1.0	800	10	1400x1350	800x2100	2050x1750	1500	4600	5.4	25700	27100	72800	56000
TKJW800/1.5		1.5				1600	4700	8.1				
TKJW800/1.75		1.75				1700	4800	9.4				
TKJW1000/1.0	1000	13	1600x1400	900x2100	2250x1800	1500	4600	6.7	27400	39600	88000	68000
TKJW1000/1.5		1.5				1600	4700	10.1				
TKJW1000/1.75		1.75				1700	4800	11.8				

(The data is for design reference only. Regarding detailed parameters, please take technical drawing as criterion.)
Note: If specification exceeds above range, please contact SIGMA Elevator Company.

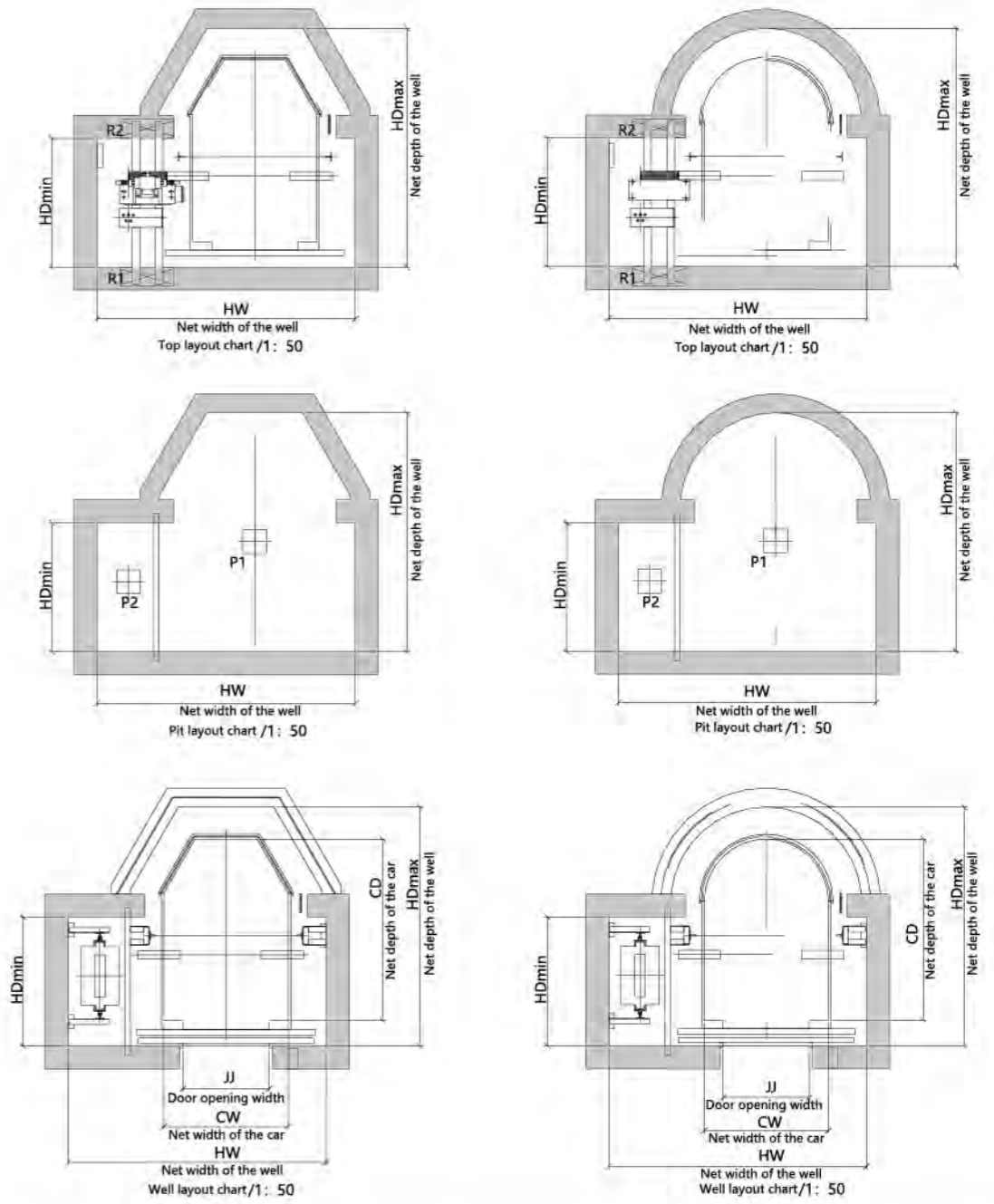
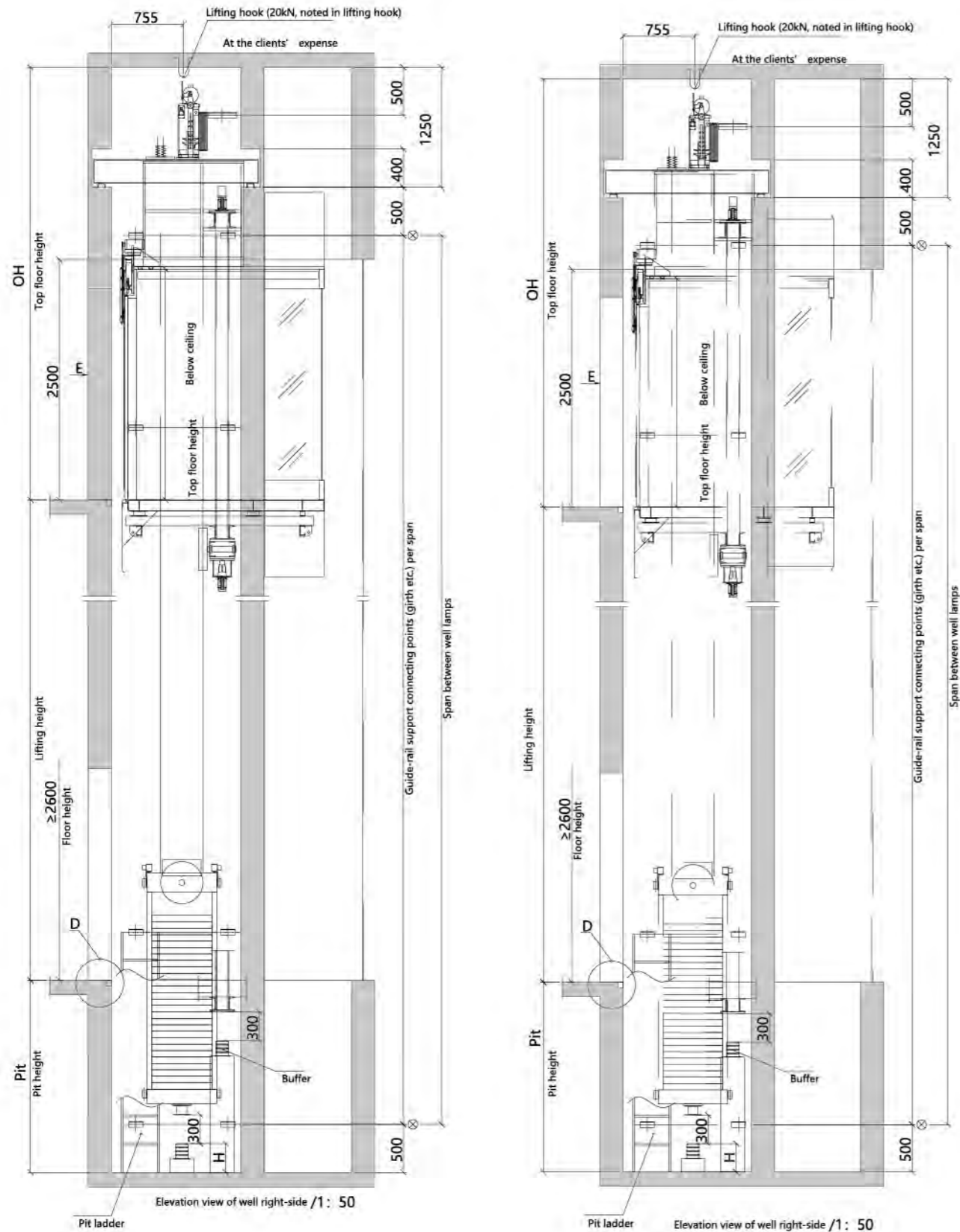
MACHINE ROOM-LESS OBSERVATION ELEVATOR CONSTRUCTION SKETCH (SQUARE)



Model	Load KG	Passenger speed NO. m/s	(mm) Car specification CWxCD	(mm) Door opening size JJxOPH	(mm) Well size HWxHDmin-HDmax	(mm) Pit depth Pit	(mm) Top floor height OH	Power	(N) Acting force				
									R1	R2	P1	P2	
TGJW450/1.0	450	6	1100x1100	700x2100	2000x1700	1600	4600	3.2	16500	21000	44000	35000	
TGJW450/1.5						1.5	1700	4700					4.9
TGJW630/1.0	630	8	1200x1300	800x2100	2100x1800	1600	4600	4.3	19800	26400	58000	45600	
TGJW630/1.5						1.5	1700	4700					6.4
TGJW630/1.75						1.75	1700	4800					7.5
TGJW800/1.0	800	10	1400x1350	800x2100	2300x1800	1600	4600	5.4	25700	27100	72800	56000	
TGJW800/1.5						1.5	1700	4700					8.1
TGJW800/1.75						1.75	1700	4700					9.4
TGJW1000/1.0	1000	13	1600x1400	900x2100	2500x1900	1600	4600	6.7	27400	39600	88000	68000	
TGJW1000/1.5						1.5	1700	4700					10
TGJW1000/1.75						1.75	1700	4700					11.7
TGJW1150/1.0	1150	15	1900x1400	1000x2100	2800x2000	1600	4600	7.8	30400	43600	92000	75000	
TGJW1150/1.5						1.5	1700	4700					11.7
TGJW1150/1.75						1.75	1700	4700					13.6
TGJW1250/1.0	1250	16	1900x1500	1100x2100	2900x2000	1600	4600	8.5	32200	46800	106000	81000	
TGJW1250/1.5						1.5	1700	4700					12.7
TGJW1250/1.75						1.75	1700	4700					14.9
TGJW1350/1.0	1350	18	1900x1600	1100x2100	2900x2400	1600	4600	9.2	37600	46400	114000	87000	
TGJW1350/1.5						1.5	1700	4700					13.8
TGJW1350/1.75						1.75	1700	4700					16.1
TGJW1600/1.0	1600	21	2000x1750	1200x2100	3000x2400	1600	4600	11	39600	56500	128000	96000	
TGJW1600/1.5						1.5	1700	4700					16.6
TGJW1600/1.75						1.75	1700	4700					19.4

(The data is for design reference only. Regarding detailed parameters, please take technical drawing as criterion.)
Note: If specification exceeds above range, please contact SIGMA Elevator Company.

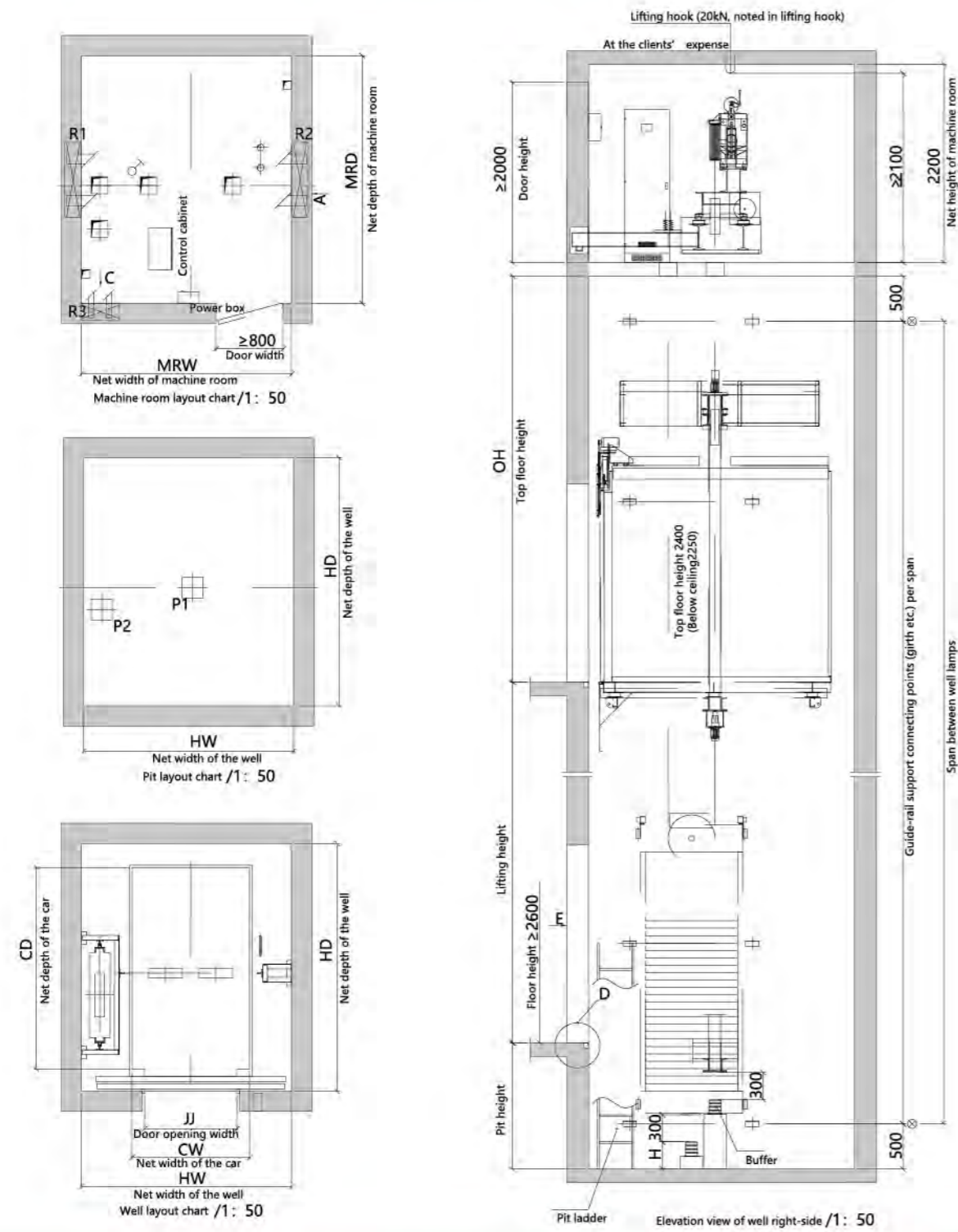
MACHINE ROOM-LESS OBSERVATION ELEVATOR CONSTRUCTION SKETCH (ROUND/DIAMOND)



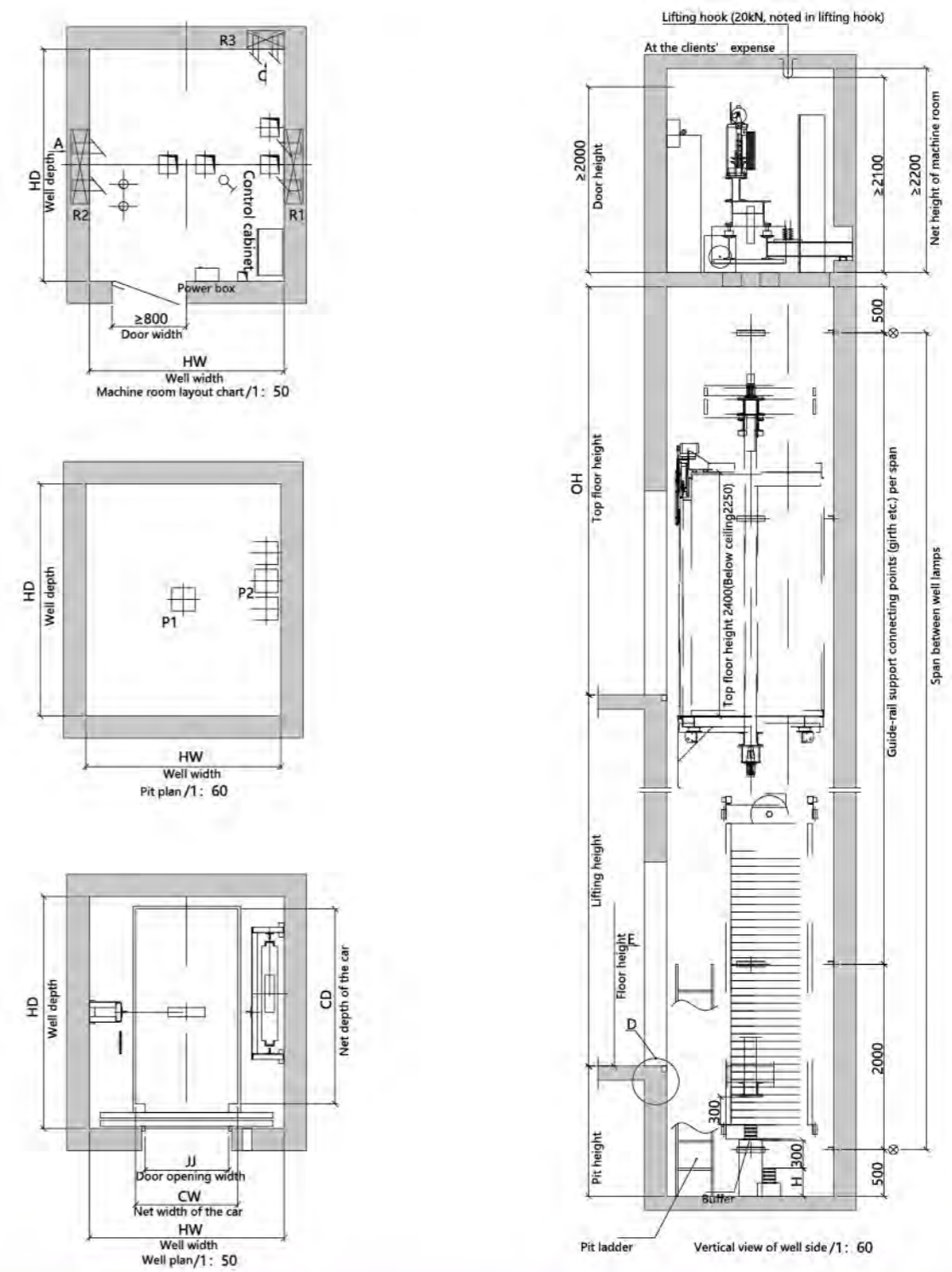
Model	Load KG	Passenger NO.	speed m/s	(mm) Car specification CWxCD	(mm) Door opening size JJxOPH	(mm) Well size HWxHDmin-HDmax	(mm) Pit depth Pit	(mm) Top floor height OH	Power	(N) Acting force			
										R1	R2	P1	P2
TGJW450/1.0	450	6	1	1000x1400	700x2100	2400x1050-2000	1800	4600	3.2	17600	22400	52000	41000
TGJW450/1.5			1900				4700	4.9					
TGJW630/1.0	630	8	1	1100x1600	800x2100	2500x1200-2200	1800	4600	4.3	21200	28800	65000	52000
TGJW630/1.5			1900				4700	6.4					
TGJW630/1.75			1900				4700	7.5					
TGJW800/1.0	800	10	1	1200x1800	800x2100	2600x1300-2400	1800	4600	5.4	25200	35200	80000	64000
TGJW800/1.5			1900				4700	8.1					
TGJW800/1.75			1900				4700	9.4					
TGJW1000/1.0	1000	13	1	1300x1900	900x2100	2700x1350-2500	1800	4600	6.7	29200	42800	96000	76000
TGJW1000/1.5			1900				4700	10					
TGJW1000/1.75			1900				4700	11.7					
TGJW1600/1.0	1600	21	1	1700x2200	1100x2100	3100x1500-2800	1800	4600	11	36600	63400	136000	104000
TGJW1600/1.5			1900				4700	16.6					
TGJW1600/1.75			1900				4800	19.4					

(The data is for design reference only. Regarding detailed parameters, please take technical drawing as criterion.)
Note: If specification exceeds above range, please contact SIGMA Elevator Company.

HOSPITAL ELEVATOR CONSTRUCTION SKETCH



STRETCHER ELEVATOR CONSTRUCTION SKETCH



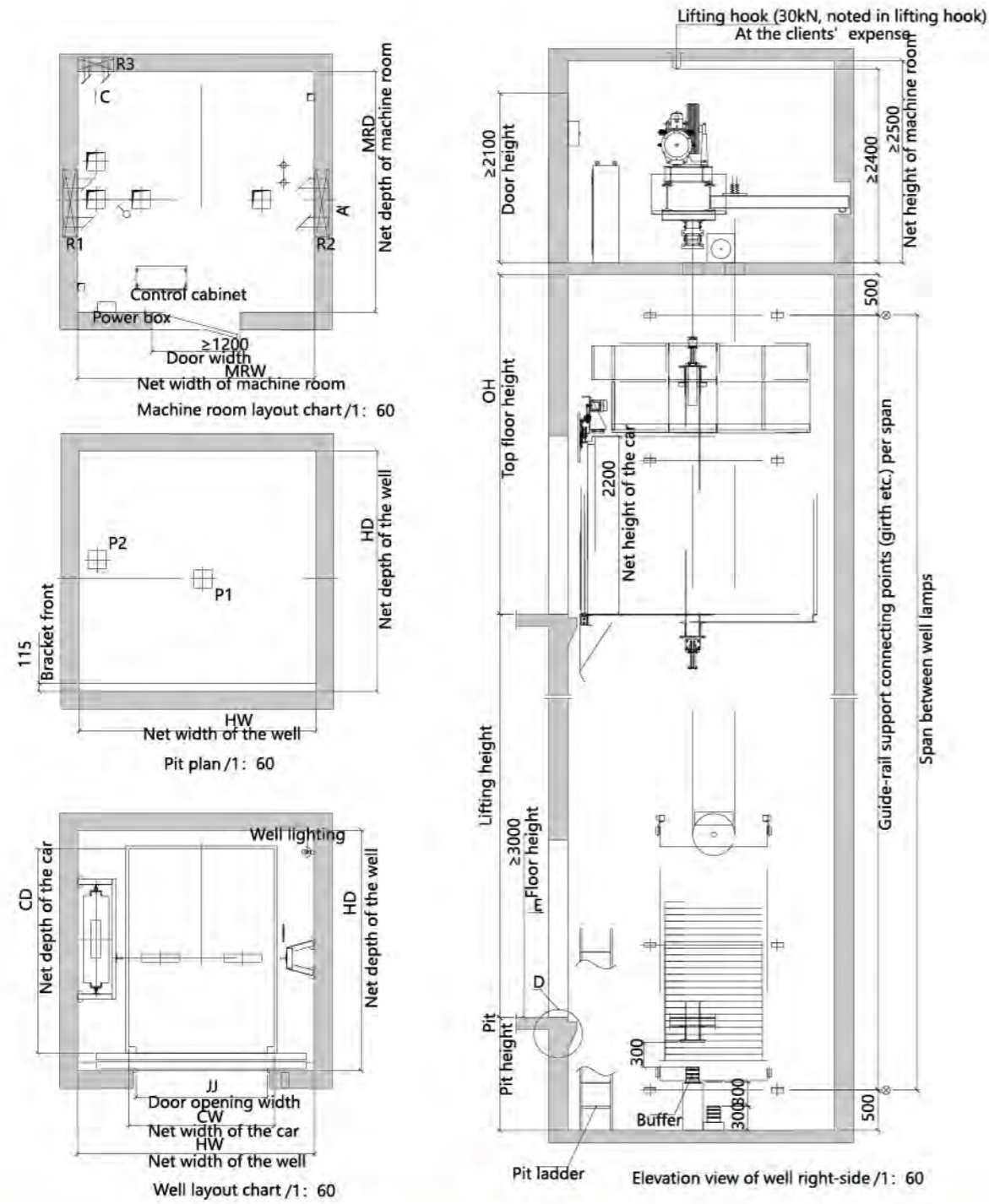
Model	Load KG	Passenger NO.	speed m/s	Car specification CWxCD	Door opening size JJxOPH	Well size HWxHD	Machine room size MRWxMRD	Pit depth Pit	Top floor height OH	Power	(N) Acting force				
											R1	R2	R3	P1	P2
TBJ1600/1.0			1					1400	4600	11					
TBJ1600/1.5	1600	21	1.5	1400x2400	1100x2100	2500x2950	2500x2950	1500	4700	16.6	73600	47600	9600	128000	96000
TBJ1600/1.75			1.75					1600	4800	19.4					

(The data is for design reference only. Regarding detailed parameters, please take technical drawing as criterion.)
 Note: If specification exceeds above range, please contact SIGMA Elevator Company.

Model	Load KG	Passenger NO.	speed m/s	Car specification CWxCD	Door opening size JJxOPH	Well size HWxHD	Machine room size MRWxMRD	Pit depth Pit	Top floor height OH	Power	(N) Acting force				
											R1	R2	R3	P1	P2
TKJ1000/1.0			1					1400	4500	6.7					
TKJ1000/1.5	1000	13	1.5	1100x2100	900x2100	2100x2500	2100x2500	1500	4600	10	53400	32200	6000	88000	68000
TKJ1000/1.75			1.75					1600	4700	11.7					

(The data is for design reference only. Regarding detailed parameters, please take technical drawing as criterion.)
 Note: If specification exceeds above range, please contact SIGMA Elevator Company.

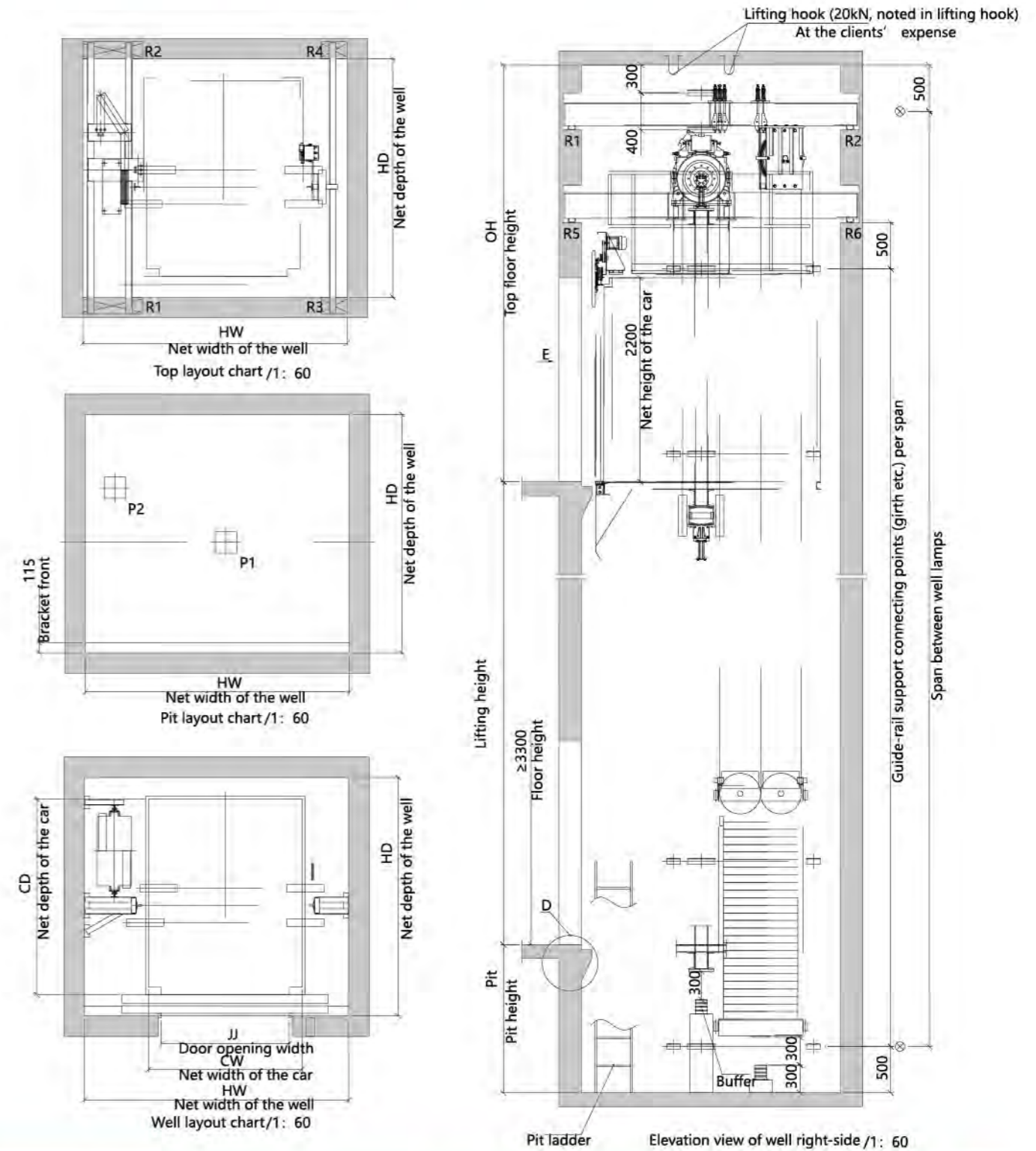
FREIGHT ELEVATOR CONSTRUCTION SKETCH



Model	Load KG	speed m/s	(mm) Car specification CWxCD	(mm) Door opening size JJxOPH	(mm) Well size HWxHD	(mm) Machine room size MRWxMRD	(mm) Pit depth Pit	(mm) Top floor height OH	Power	(N) Acting force				
										R1	R2	R3	P1	P2
THJ1000/0.5	1000	0.5	1400x1700	1200x2100	2200x2200	2500x2500	1500	4200	7.5	54600	47800	7400	88000	68000
THJ1600/0.5	1600	0.5	1500x2300	1400x2100	2500x2800	2500x2800	1500	4200	11	67600	58200	7400	124000	92000
THJ2000/0.5	2000	0.5	1800x2300	1500x2100	2800x2800	2800x2800	1500	4200	11	85600	55200	8400	144000	104000
THJ3000/0.5	3000	0.5	2000x2800	1800x2100	3250x3300	3250x3300	1500	4200	15	144800	75200	12000	224000	164000
THJ4000/0.5	4000	0.5	2200x3300	2200x2300	3700x3800	3700x3800	1500	5000	18.5	190000	105200	16400	148000	108000
THJ5000/0.5	5000	0.5	2400x3600	2200x2300	3800x4100	3800x4100	1500	5000	22	213800	117200	18200	172000	122000

(The data is for design reference only. Regarding detailed parameters, please take technical drawing as criterion.)
Note: If specification exceeds above range, please contact SIGMA Elevator Company.

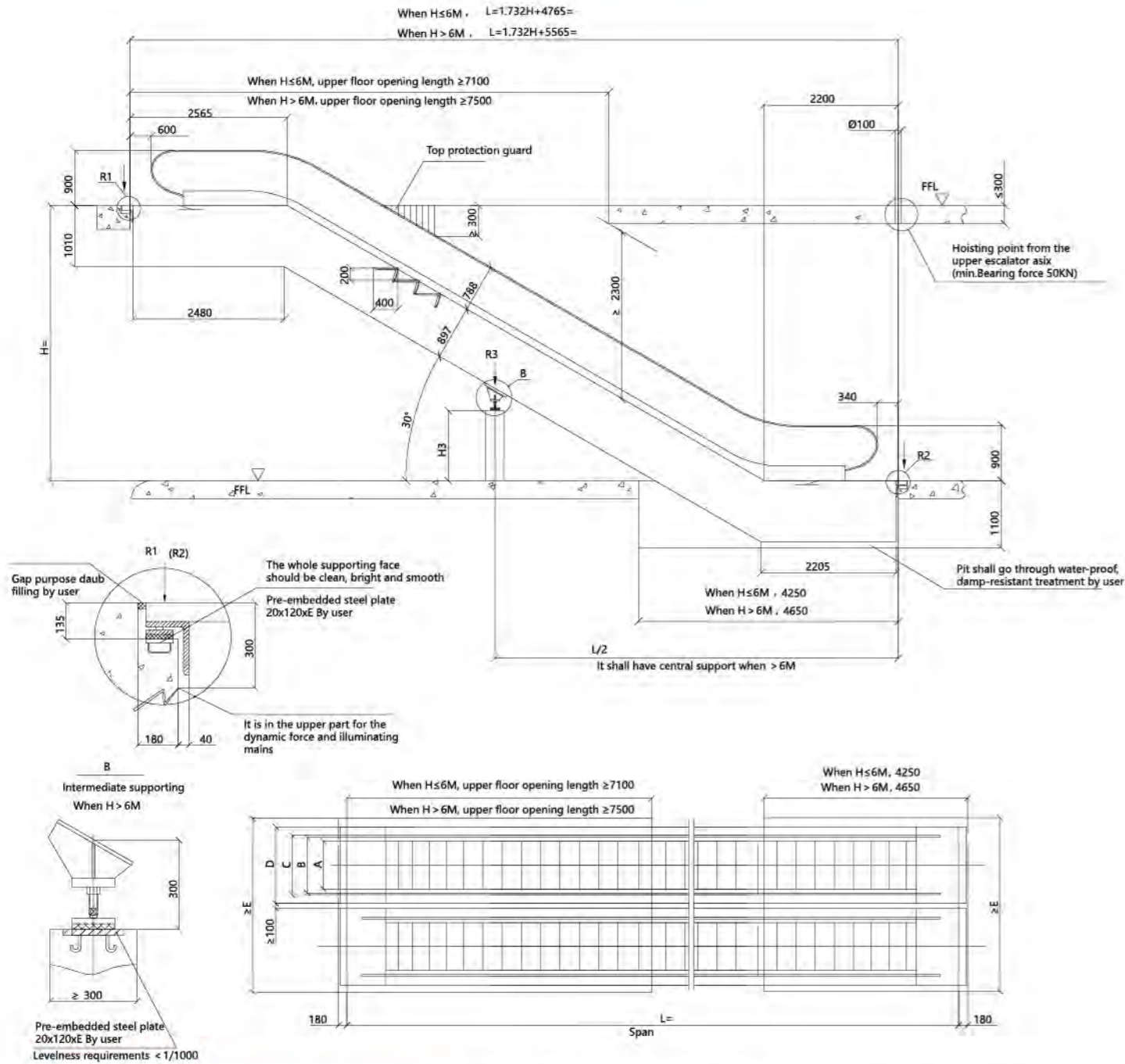
MACHINE ROOM-LESS FREIGHT ELEVATOR CONSTRUCTION SKETCH



Model	Load KG	speed m/s	(mm) Car specification CWxCD	(mm) Door opening size JJxOPH	(mm) Well size HWxHD	(mm) Pit depth Pit	(mm) Top floor height OH	Power	(N) Acting force							
									R1	R2	R3	R4	R5	R6	P1	P2
THJW1600/0.5	1600	0.5	1800x1900	1500x2100	3100x2400	1600	4500	5.5	40400	73600	29000	29000	22600	19400	124000	92000
THJW2000/0.5	2000	0.5	1800x2300	1500x2100	3100x2800	1600	4500	6.7	40400	73600	29000	29000	22600	19400	144000	104000
THJW3000/0.5	3000	0.5	2000x2800	1800x2100	3450x3300	1600	4500	10	60600	110400	43500	43500	33900	29100	224000	164000

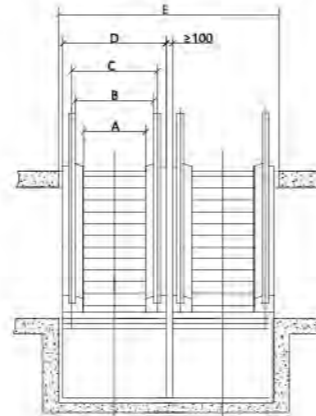
(The data is for design reference only. Regarding detailed parameters, please take technical drawing as criterion.)
Note: If specification exceeds above range, please contact SIGMA Elevator Company.

30° ESCALATOR CONSTRUCTION SKETCH

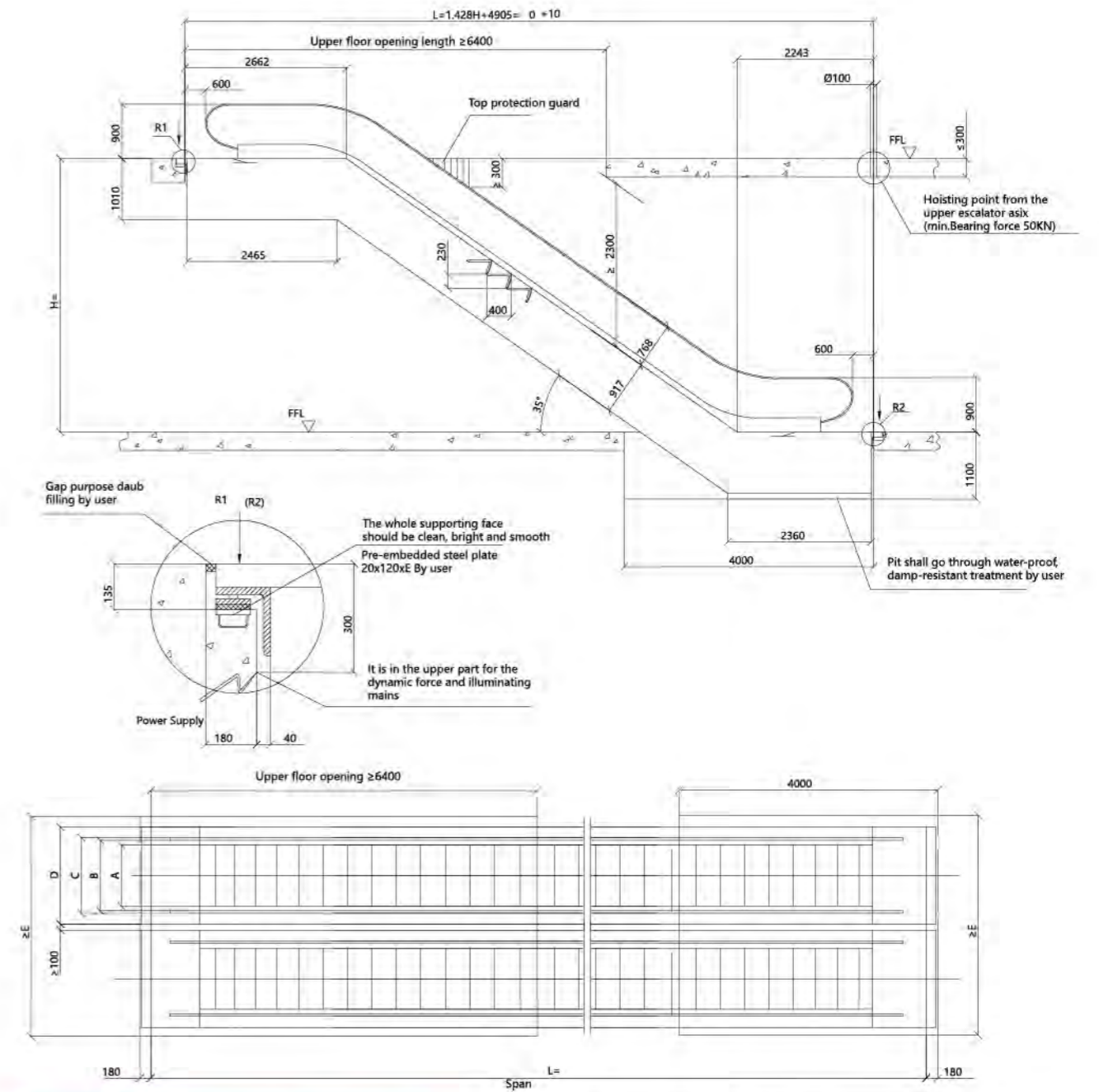


Model	Travelling height(mm)	Net weight (kN)	supporting		Motor power kW	Transport size	
			R1 kN	R2 kN		h	l
VF800/0.5-30° (4800/h)	3000	118	104	94	5.5	2750	10900
	3500	126	112	100		2780	11890
	4000	134	120	108		2810	12880
	4500	142	128	114		2830	13870
	5000	148	136	120		2840	14860
speed: 0.5m/s	5500	164	148	132	2860	15860	
	6000	172	156	138	2870	16850	
	6000	184	176	158	2870	16850	
VF1000/0.5-30° (6000/h)	3000	126	118	106	8	2750	10900
	3500	134	128	114		2780	11890
	4000	142	136	122		2810	12880
	4500	150	146	130		2830	13870
	5000	166	158	142		2840	14860
speed: 0.5m/s	5500	174	168	150	2860	15860	
	6000	184	176	158	2870	16850	

1000	1000	1228	1238	1600	3400	
800	800	1028	1038	1400	3000	
mm step width		A	B	C	D	E
H3 Intermediate supporting $(L/2 - 2600) \times \tan 30^\circ - (897 / \cos 30^\circ) + 300$						

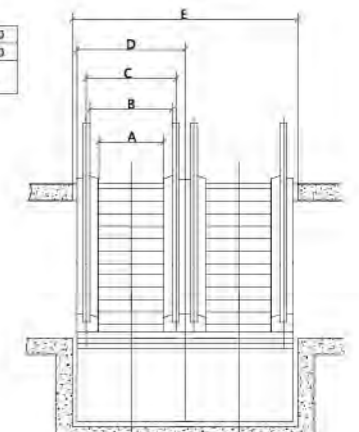


35° ESCALATOR CONSTRUCTION SKETCH

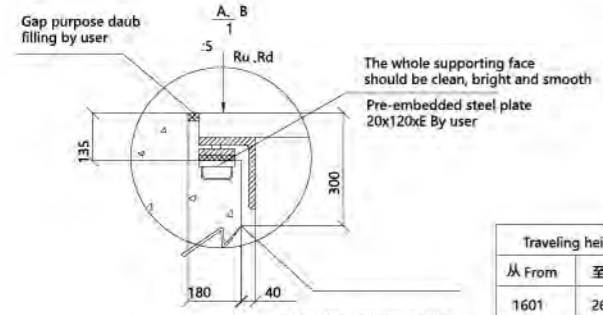
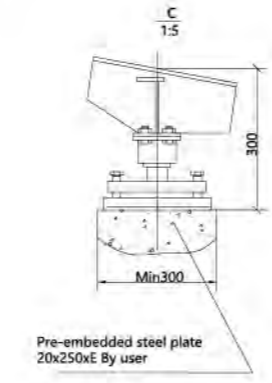
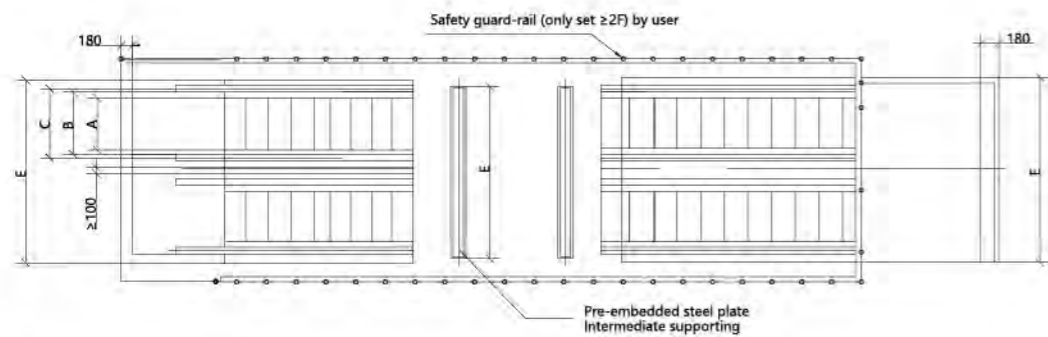
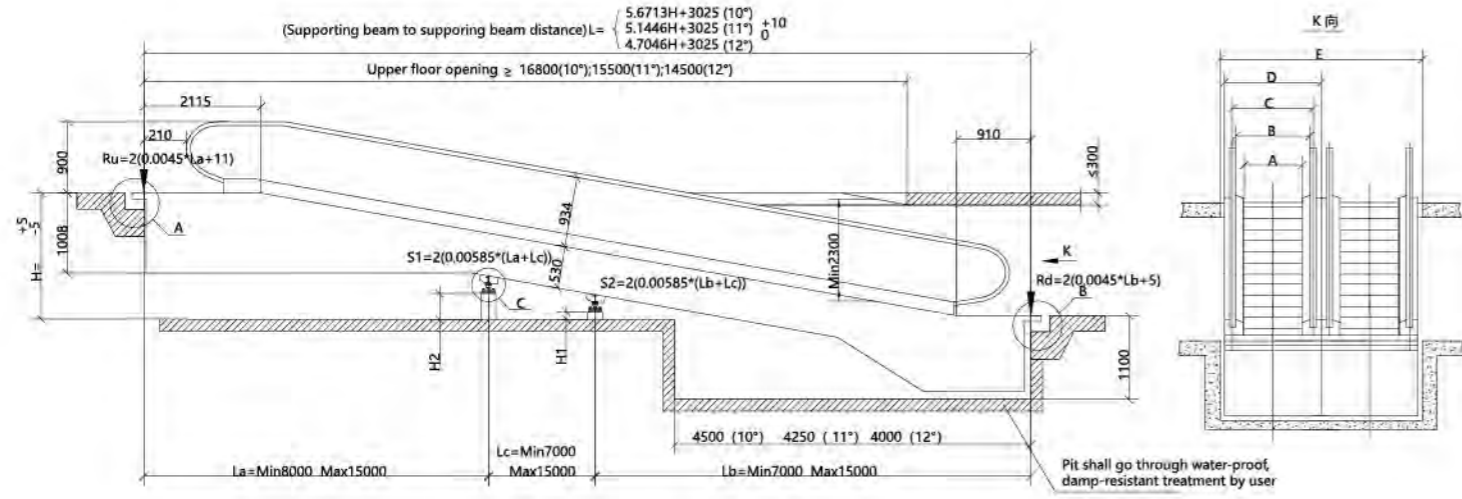


Model	Travelling height(mm)	Net weight (kN)	supporting		Motor power kW	Transport size	
			R1 kN	R2 kN		h	l
VF800/0.5-35° (4800/h)	3000	112	98	88	5.5	2850	10180
	3500	120	104	94		2890	11030
	4000	126	112	100		2920	11890
	4500	132	118	106		2940	12750
	5000	140	124	112		2970	13610
speed: 0.5m/s	5500	146	130	118	2980	14470	
	6000	152	138	122	3000	15330	
	6000	166	162	144	3000	15330	
VF1000/0.5-35° (6000/h)	3000	120	112	100	8	2850	10180
	3500	128	120	106		2890	11030
	4000	134	128	114		2920	11890
	4500	142	134	120		2940	12750
	5000	148	142	128		2970	13610
speed: 0.5m/s	5500	158	154	138	2980	14470	
	6000	166	162	144	3000	15330	

1000	1000	1228	1238	1600	3400	
800	800	1028	1038	1400	3000	
mm step width		A	B	C	D	E



12° MOVING WALK CONSTRUCTION SKETCH



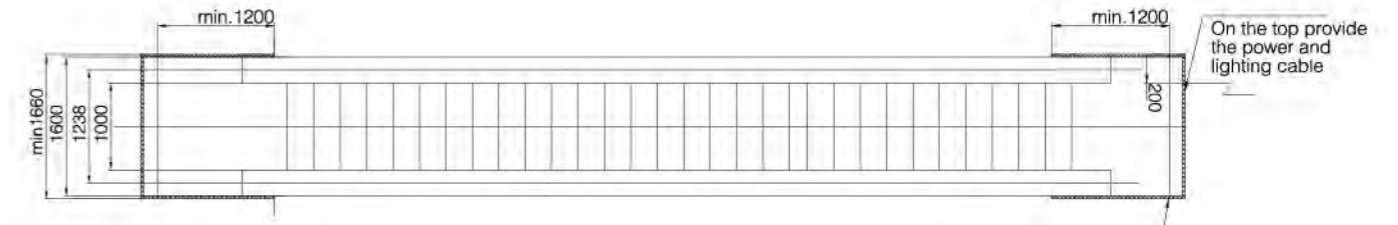
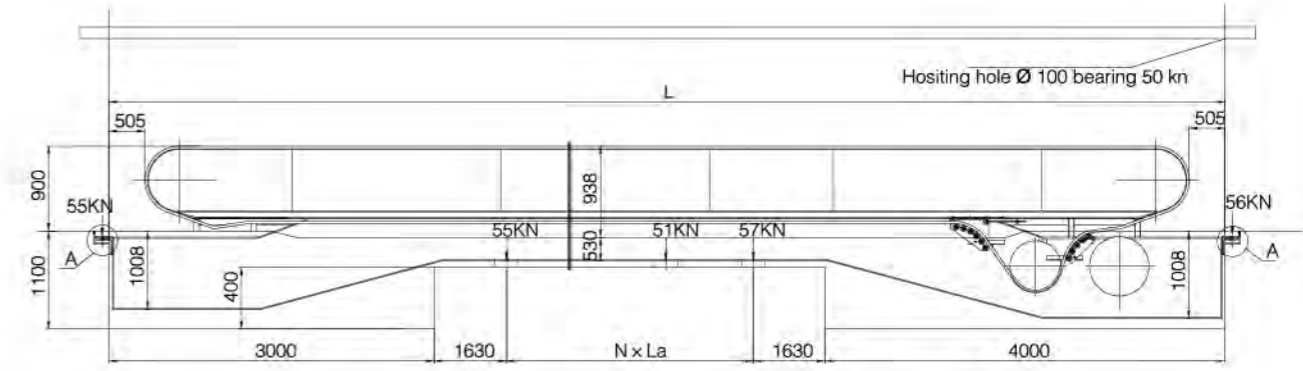
1000	1000	1228	1238	1600	3400
800	800	1028	1038	1400	3000
step width mm	A	B	C	D	E

Traveling height		Intermediate supporting		La(mm)	L b (mm)	L c (mm)
从 From	至 To	S1	S2			
1601	2663					
2664	4151	1		L-7000	7000	
4152	5851	1		15000	L-15000	
5852	6000	1	1	15000	7000	L-22000
A		H2			H1	
10°		H2=H-(La-1995) × 0.1763-840			H1=H2-(Lc × 0.1763)	
11°		H2=H-(La-2055) × 0.1944-840			H1=H2-(Lc × 0.1944)	
12°		H2=H-(La-2115) × 0.2126-840			H1=H2-(Lc × 0.2126)	

Note: when traveling height is over 6m, construction size please consult our company

(mm) step width	(mm) Traveling height	(m/s) Speed	(h) Rated load capacity	(°) Inclination	(kW) Power	(KVA) Power supply capacity	(A) Rated current
800	1000-3800	0.5	4800	10,11,12	7.5	15	39
	3800-6000				11	22	58
1000	1000-3000	0.5	6000	10,11,12	7.5	15	39
	3000-4800				11	22	58
	4800-6000				15	30	78

0° MOVING WALK CONSTRUCTION SKETCH



It should fill or cover the gap between the machine and the construction. The user should take care of the standard which is applicable for the well width.

Model	Travelling height(mm)	(m/s) Rated speed	(per/h) Capacity	(°) inclination	(Kw) Motor power	A (mm)	B (mm)	C (mm)	D (mm)
SD (800/0°-6°)	10000 ≤ H ≤ 80000	0.5	6750	0-6	8	800	1038	1400	≥1460
	80000 < H ≤ 150000				11				
SD (1000/0°-6°)	10000 ≤ H ≤ 70000	0.5	9000	0-6	8	1000	1238	1600	≥1660
	70000 < H ≤ 150000				11				

(The data is for design reference only. Regarding detailed parameters, please take technical drawing as criterion.)
Note: If specification exceeds above range, please contact SIGMA Elevator Company.

SERVICE SYSTEM

Full-course service brings about closer heart-to-heart communication.

Good service ensures your safety. It warrants your investment in equipment. Truly nice service can predict and satisfy special requirements from vast clients. As service definition varies according to different customers' requirements, our methods are also extensive and individual in order to meet those demands.



service team

All maintenance service personnel are received strict on-the-job training to execute standard maintenance procedures and provide perfect service experience for customers by depending on strong technical supporting network as well as management system.



spare parts

All supplied spare parts are conducted strict test before delivery, which includes escalator' s components of various models; distribution network has covered lots of cities all over the country for rapid supply and timely replacement.



maintenance update

The daily maintenance and upgrading service of high quality elevators provide a good foundation for the efficient operation of the building, and save the customer's elevator maintenance cost.



remote monitoring system

Achieve informatization management of operations such as 24-hour remote elevator monitoring, timely alarm along with rescue and maintenance, inspection etc so as to guarantee elevator' s safe operation and carry out more convenient and efficient elevator management.